



STATESMAN
HOMES

Welcome to our
Aldinga Beach
display homes

FEATURING THE MOANA AND ADELAIDE MK II



Moana

18.83
squares

Open-plan living at its best! This outstanding home offers plenty of room for entertaining and family living.

Specifications

Living Area : 136.79 sqm

Porch : 2.17 sqm

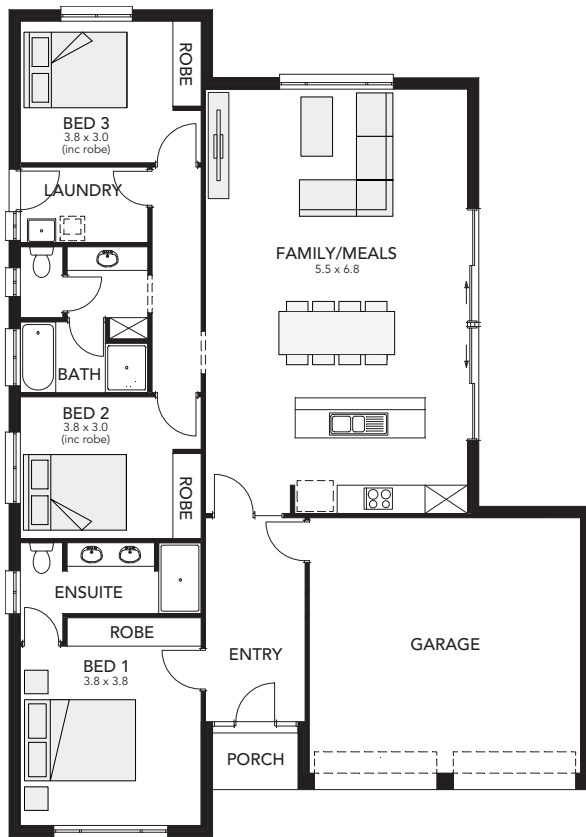
Garage : 36.00 sqm

Total : 174.96 sqm

Width : 12.35m (inc. double garage)

Depth : 17.52m

- three bedrooms
- large open-plan living area
- double garage with internal access
- robes to all bedrooms
- two sets of double glass sliding doors to kitchen
- convenient three-way bathroom
- ensuite to master bedroom with double vanity and wide shower





Adelaide Mk II

30.60
squares

An executive residence which provides every luxury for modern living including a palatial master bedroom suite.

Specifications

Living Area : 237.52 sqm

Verandah : 6.38 sqm

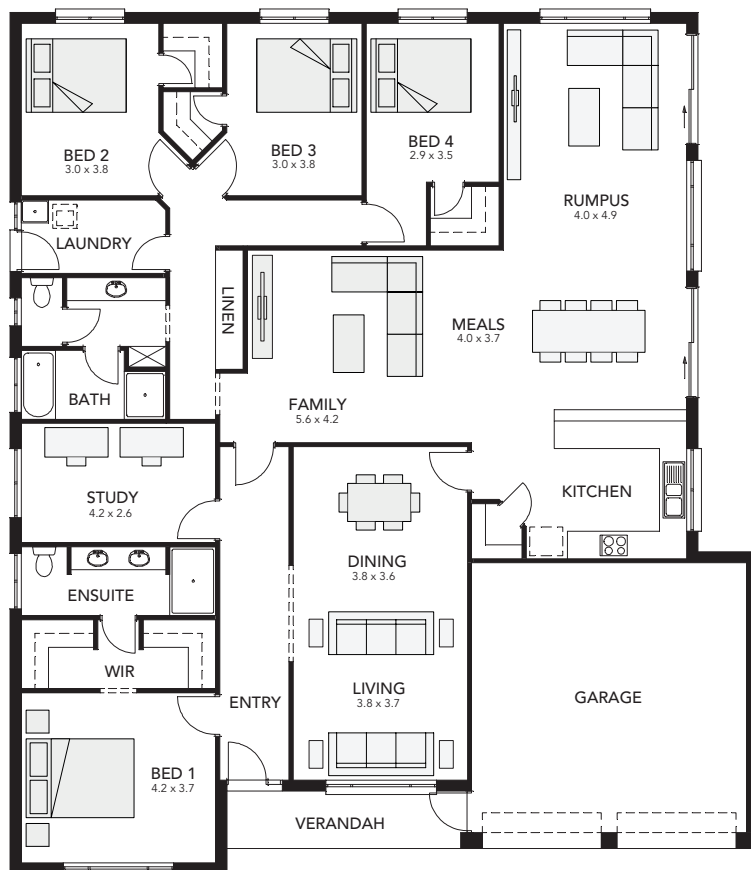
Garage : 40.37 sqm

Total : 284.27 sqm

Width : 16.29m (inc. double garage)

Depth : 18.78m

- four bedrooms
- open-plan family & meals area
- double garage
- separate formal dining area
- separate study
- games and home theatre area at the rear
- walk-in robes to beds 2, 3 & 4
- his and her walk-in robes and ensuite to master bedroom
- two sets of double sliding doors to outside



See our great homes for yourself



Display village open every Monday, Wednesday,
Saturday and Sunday from 1 - 5pm

Moana and Adelaide Mk II on display at

ALDINGA BEACH
Aldinga Beach Rd
Sunday
8557 6150

Unbeaten on Price and Quality

25 North Terrace Hackney
South Australia 5069
Phone 8366 0080
info@statesman-homes.com.au
www.statesman-homes.com.au
Builder's Licence No. G8969

These floorplans and elevations are for illustration purposes only. Please refer to the working drawings you receive upon signing a contract for precise measurements. To the extent that there is any conflict between the material contained in this brochure and the contract of sale, the purchaser acknowledges that the terms of the contract of sale will at all times prevail. Prices may change without notice.
© 2019 Statesman Homes. E&OE AUGUST 2019.

**STATESMAN
HOMES**