



**STATESMAN  
HOMES**

Welcome to our  
Brookmont  
display home

FEATURING THE FINDON



## Findon 21.52 squares

This spacious design includes lots of spacious open plan living area at the rear and a large home theatre.

### Specifications

Living Area : 163.07 sqm

Porch : 1.50 sqm

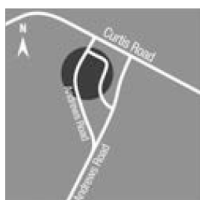
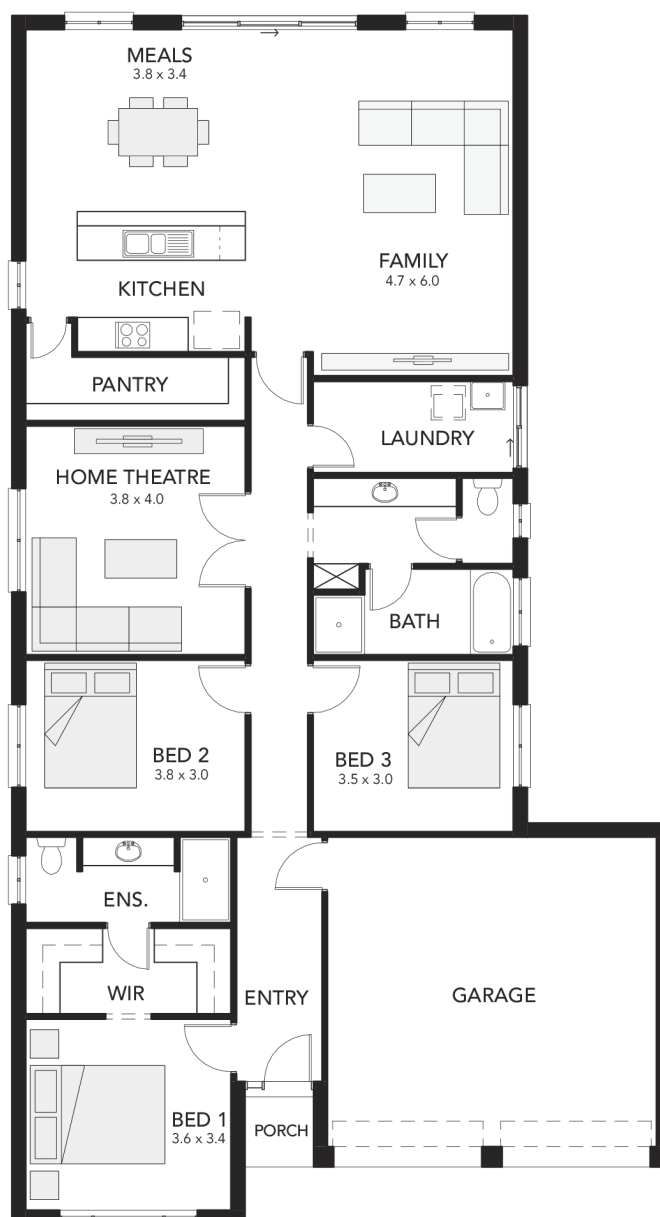
Garage : 35.40 sqm

Total : 199.97 sqm

Width : 11.50m (inc. double garage)

Depth : 21.10m

- three bedrooms
- walk-in robe and ensuite to master bedroom
- designated home theatre
- double garage
- internal access to/from garage
- three-way bathroom for added convenience
- walk-in pantry



Findon at  
Andrews Road  
MacDonald Park  
Brookmont

25 North Terrace  
Hackney, SA 5069  
Phone 8366 0080  
info@statesman-homes.com.au  
www.statesman-homes.com.au  
Builder's Licence No. G8969

Display village open every  
Mon, Wed, Sat and Sun  
from 1pm - 5pm

This floorplan and elevations are for illustration purposes only. Please refer to the working drawings you receive upon signing a contract for precise measurements. To the extent that there is any conflict between the material contained in this brochure and the contract of sale, the purchaser acknowledges that the terms of the contract of sale will at all times prevail.  
© 2019 Statesman Homes. E&OE JULY 2019.