



**STATESMAN
HOMES**

Welcome to
our Brookmont
display home

FEATURING THE FELIXSTOW ALFRESCO



Felixstow Alfresco

25.36
squares

A spacious family home with walls of glass that bring the outdoors in, complete with a large alfresco.

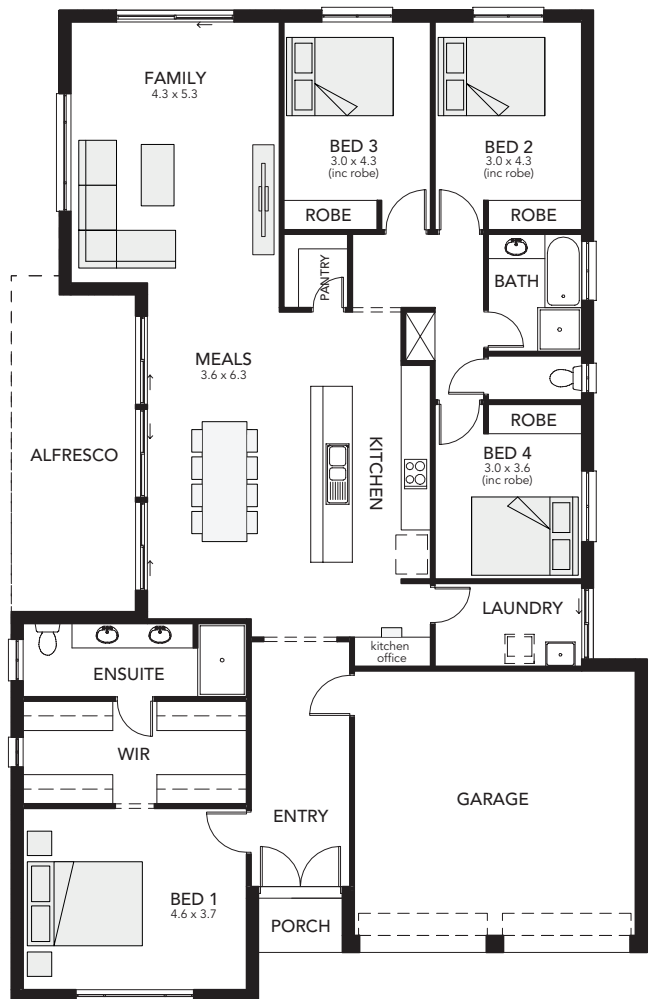
Specifications

Living Area : 181.81 sqm
Porch : 1.90 sqm
Garage : 35.09 sqm
Width : 13.00 m (inc. double garage)
Depth : 20.27 m
Total : 235.64 sqm

- Four bedrooms.
- Spacious his and her walk-in robe and ensuite to master bedroom.
- Large alfresco entertaining area.
- Internal access from garage.
- Handy kitchen office.
- Open-plan kitchen.
- Double garage.



Scan the QR code with your phone to explore our locations.



Felixstow Alfresco at
Elkhorn Crescent,
Andrews Farm

Display village open every
Mon, Wed, Sat and Sun
from 1pm - 5pm

25 North Terrace
Hackney, SA 5069
Phone 8366 0080
info@statesman-homes.com.au
www.statesman-homes.com.au
Builder's Licence No. G8969

This floorplan and elevations are for illustration purposes only. Please refer to the working drawings you receive upon signing a contract for precise measurements. To the extent that there is any conflict between the material contained in this brochure and the contract of sale, the purchaser acknowledges that the terms of the contract of sale will at all times prevail.
© 2024 Statesman Homes. E&OE MAY 2024.