



**STATESMAN  
HOMES**

Welcome to our  
Springwood  
display home

FEATURING THE FELIXSTOW ALFRESCO



## Felixstow Alf.

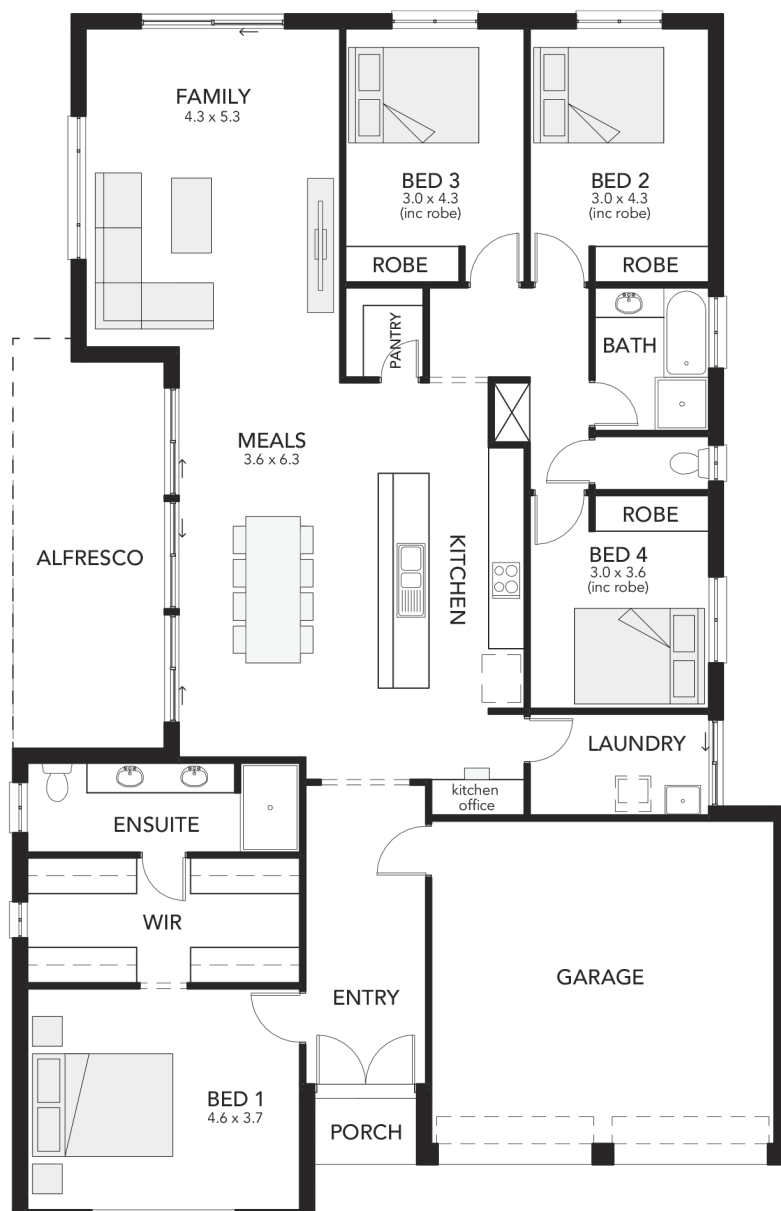
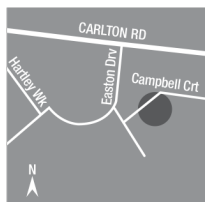
25.36  
squares

A spacious family home with walls of glass that bring the outdoors in, complete with a large alfresco.

### Specifications

Living Area : 181.81 sqm  
Porch : 1.90 sqm  
Alfresco : 16.84 sqm  
Garage : 35.09 sqm  
Total : 235.64 sqm  
Width : 13.00m (inc. double garage)  
Depth : 20.27m

- four bedrooms
- spacious his and her walk-in robe and ensuite to master bedroom
- large alfresco entertaining area
- internal access from garage
- handy kitchen office
- open-plan kitchen
- double garage



Felixstow Alfresco at  
Gawler East  
Campbell Crt  
Springwood

Display village open every  
Mon, Wed, Sat and Sun  
from 1pm - 5pm

25 North Terrace  
Hackney, SA 5069  
Phone 8366 0080  
[info@statesman-homes.com.au](mailto:info@statesman-homes.com.au)  
[www.statesman-homes.com.au](http://www.statesman-homes.com.au)  
Builder's Licence No. G8969

This floorplan and elevations are for illustration purposes only. Please refer to the working drawings you receive upon signing a contract for precise measurements. To the extent that there is any conflict between the material contained in this brochure and the contract of sale, the purchaser acknowledges that the terms of the contract of sale will at all times prevail.  
© 2019 Statesman Homes. E&OE JULY 2019.