



STATESMAN
HOMES

Welcome to our
Gawler East
display home

FEATURING THE FELIXSTOW ALFRESCO



Felixstow Alf.

25.36
squares

A spacious family home with walls of glass that bring the outdoors in, complete with a large alfresco.

Specifications

Living Area : 181.81 sqm

Porch : 1.90 sqm

Alfresco : 16.84 sqm

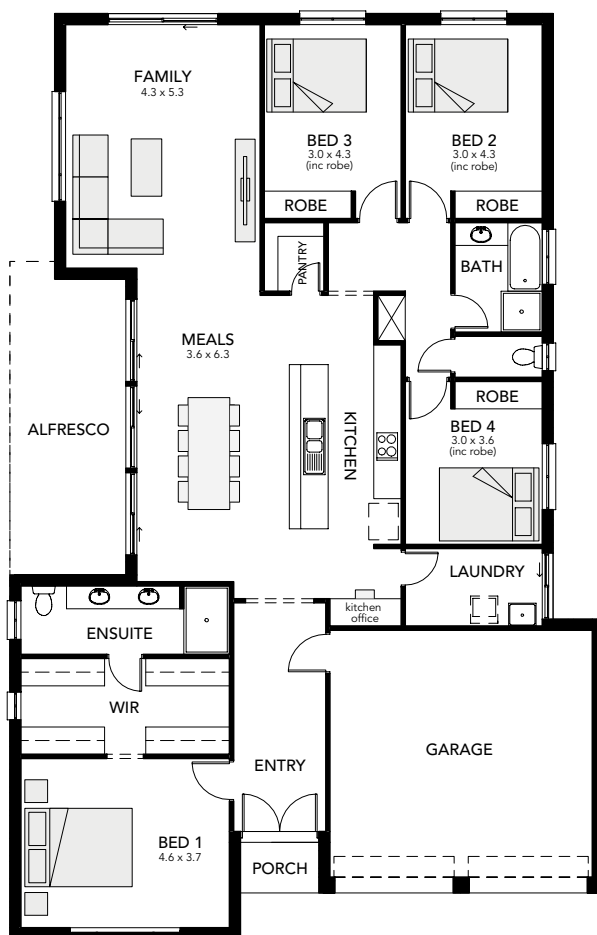
Garage : 35.09 sqm

Total : 235.64 sqm

Width : 13.00m (inc. double garage)

Depth : 20.27m

- four bedrooms
- spacious his and her walk-in robe and ensuite to master bedroom
- large alfresco entertaining area
- internal access from garage
- handy kitchen office
- open-plan kitchen
- double garage



25 North Terrace Hackney

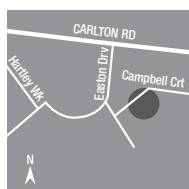
South Australia 5069

Phone 8366 0080

info@statesman-homes.com.au

www.statesman-homes.com.au

Builder's Licence No. G8969



Felixstow Alfresco
on display at

GAWLER EAST
Campbell Crt
Springwood

Display village open every
Monday, Wednesday,
Saturday and Sunday
from 1 - 5pm