



**STATESMAN  
HOMES**

**Welcome to  
our Liberty  
display home**

**FEATURING THE SEACOMBE ALFRESCO AND ASHVILLE ALFRESCO**



## Ashville Alfresco

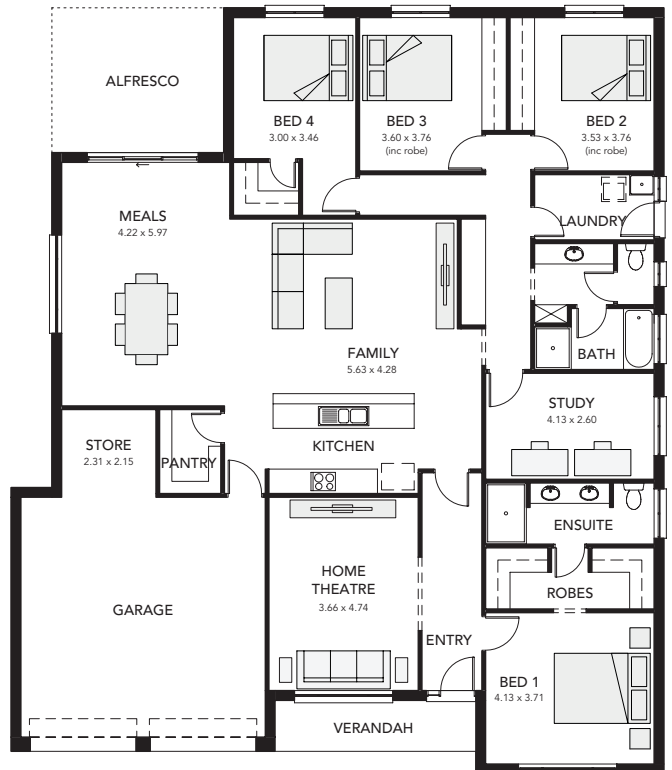
30.40 squares

Designed for family living, this beautiful home has many luxurious details including his-and-her robes, double vanity in the ensuite, a home theatre, gourmet kitchen and a large walk in pantry plus an undercover alfresco perfect for entertaining all year round.

### Specifications

Living Area : 216.50 sqm  
 Verandah : 6.15 sqm  
 Alfresco : 14.95 sqm  
 Garage/Store : 44.86 sqm  
 Total : 282.46 sqm  
 Width : 16.00m (inc. double garage)  
 Depth : 18.74m

- four bedrooms
- walk-in robe and ensuite to master bedroom
- built-in robes to beds 2, 3 & 4
- designated home theatre
- separate study area
- double garage
- internal access to/from garage
- alfresco courtyard with glass sliding door





## Seacombe Alfresco

26.41 squares

This designer home is so clever. It has four bedrooms including a majestic master suite, a separate living, a contemporary kitchen with a huge walk in pantry, a kitchen office and an under cover alfresco. But the best bit is it all fits on a 14 metre wide block.

### Specifications

Living Area : 185.67 sqm

Verandah : 1.98 sqm

Alfresco : 21.35 sqm

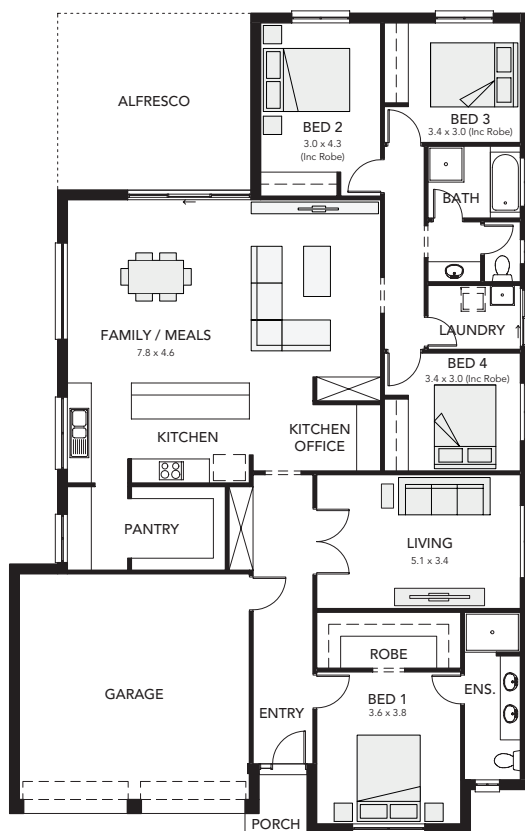
Garage : 36.41 sqm

Total : 245.41 sqm

Width : 13.00m (inc. double garage)

Depth : 20.50m

- four bedrooms
- walk-in robe and ensuite to master bedroom
- built-in robes to beds 2, 3 & 4
- separate living room
- walk-in pantry & kitchen office
- double garage
- alfresco courtyard with glass sliding door



---

See our great homes for yourself

---



Display village open every Monday, Wednesday, Saturday and Sunday from 1 - 5pm

Ashville Alfresco and Seacombe Alfresco on display at

**TWO WELLS**  
Jefferson Boulevard  
Liberty Estate  
8366 0080

# Unbeaten on Price and Quality

---

25 North Terrace Hackney  
South Australia 5069  
Phone 8366 0080  
info@statesman-homes.com.au  
www.statesman-homes.com.au  
Builder's Licence No. G8969

This floorplan and elevations are for illustration purposes only. Please refer to the working drawings you receive upon signing a contract for precise measurements. To the extent that there is any conflict between the material contained in this brochure and the contract of sale, the purchaser acknowledges that the terms of the contract of sale will at all times prevail. © 2021 Statesman Homes. E&OE January 2021.

**STATESMAN  
HOMES**