



STATESMAN
HOMES

Welcome to our Lightsview display home

FEATURING THE GLENSIDE ALFRESCO



Glenside Alf.

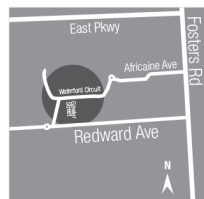
27.06
squares

This stunning home features a palatial master bedroom suite with an ensuite and huge walk-in-robe on the ground floor.

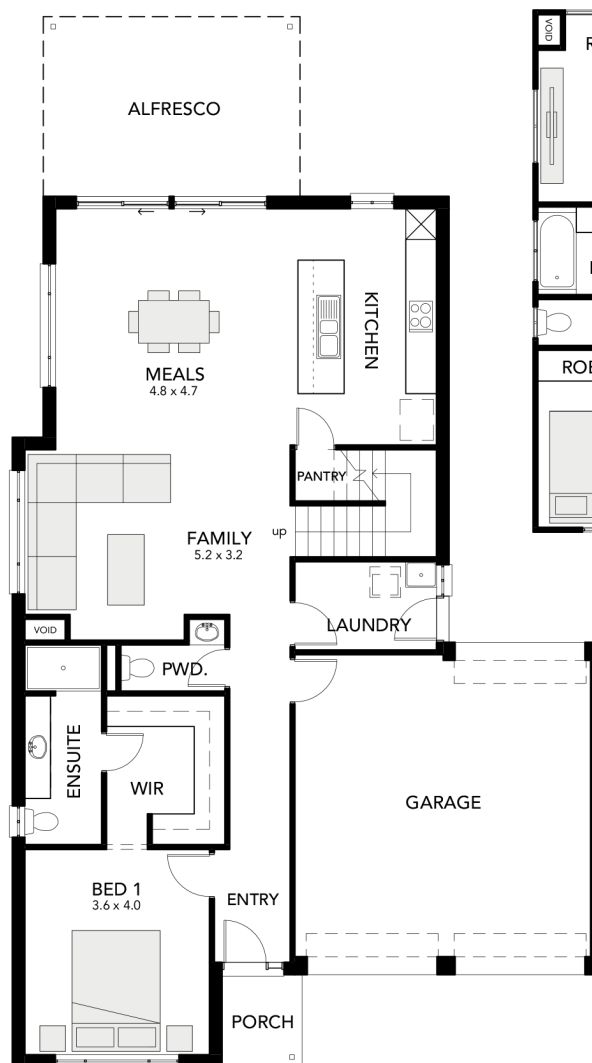
Specifications

Living Area: 193.02 sqm
Ground Floor: 114.61 sqm
First Floor: 78.41 sqm
Porch: 2.81 sqm
Alfresco: 17.50 sqm
Garage: 38.11 sqm
Total: 251.44 sqm (27.06 squares)
Width: 11.50m (inc. double garage)
Depth: 20.45m (inc. alfresco)

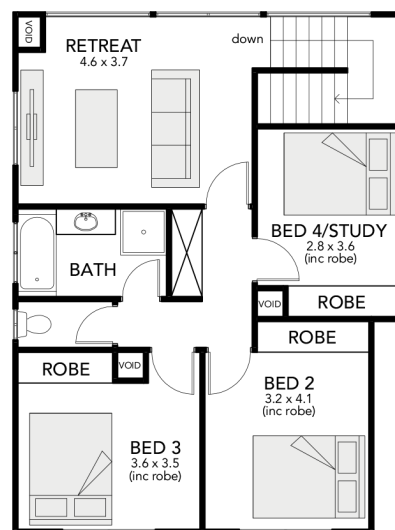
- four bedrooms
- spacious walk-in robe and ensuite to master bedroom
- internal access to/from garage
- open-plan kitchen
- double garage
- built-in robes to beds 2, 3 & 4



GROUND FLOOR



FIRST FLOOR



Glenside Alfresco at
Northgate
Gawler Street
Lightsview

Display village open every
Mon, Wed, Sat and Sun
from 1pm - 5pm

25 North Terrace
Hackney, SA 5069
Phone 8366 0080
info@statesman-homes.com.au
www.statesman-homes.com.au
Builder's Licence No. G8969

This floorplan and elevations are for illustration purposes only. Please refer to the working drawings you receive upon signing a contract for precise measurements. To the extent that there is any conflict between the material contained in this brochure and the contract of sale, the purchaser acknowledges that the terms of the contract of sale will at all times prevail.
© 2019 Statesman Homes. E&OE JULY 2019.