



**STATESMAN  
HOMES**

# Welcome to our Lightsview display home

FEATURING THE BRUNSWICK



## Brunswick

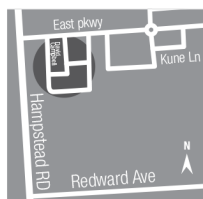
20.66 squares

A spacious Townhome with open-plan living downstairs, combined with three good-sized bedrooms and a study upstairs.

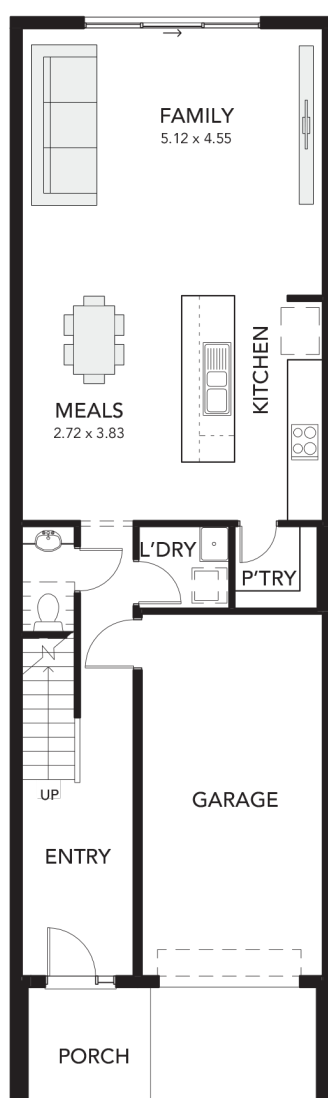
### Specifications

Living Area: 155.49 sqm  
 Ground Floor: 69.99 sqm  
 First Floor: 85.50 sqm  
 Porch: 4.76 sqm  
 Balcony: 11.00 sqm  
 Garage: 20.77 sqm  
 Total: 192.02 sqm (20.66 squares)  
 Width: 5.5 m (inc. single garage)  
 Depth: 18.5 m

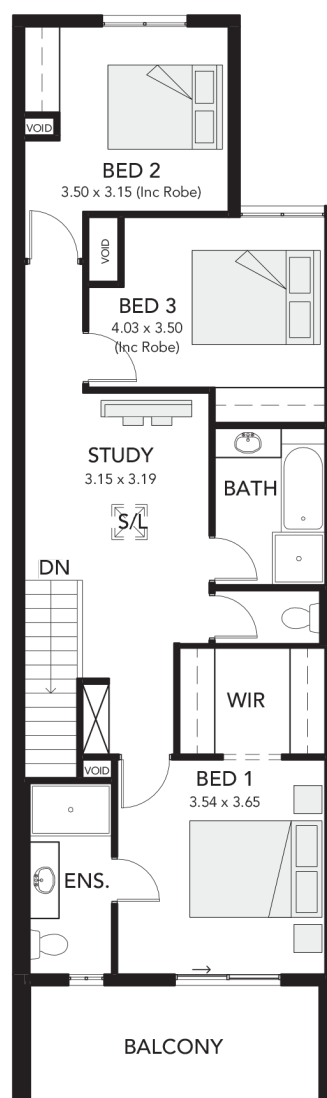
- three bedrooms
- spacious walk-in robe and ensuite to master bedroom
- internal access to/from garage
- open-plan kitchen
- single garage
- built-in robes to beds 2 & 3
- separate study/home office



GROUND FLOOR



FIRST FLOOR



Brunswick at  
 David Campbell Way  
 Lightsview  
 Northgate

25 North Terrace  
 Hackney, SA 5069  
 Phone 8366 0080  
[info@statesman-homes.com.au](mailto:info@statesman-homes.com.au)  
[www.statesman-homes.com.au](http://www.statesman-homes.com.au)  
 Builder's Licence No. G8969

Display village open every  
 Mon, Wed, Sat and Sun  
 from 1pm - 5pm

This floorplan and elevations are for illustration purposes only. Please refer to the working drawings you receive upon signing a contract for precise measurements. To the extent that there is any conflict between the material contained in this brochure and the contract of sale, the purchaser acknowledges that the terms of the contract of sale will at all times prevail.  
 © 2019 Statesman Homes. E&OE JULY 2019.