



**STATESMAN**  
HOMES

Welcome to our  
Lightsvue  
display home

FEATURING THE MYRTLE ALFRESCO



## Myrtle Alfresco

27.05  
squares

This spacious design includes lots of clever touches like a kitchen office, pantry and alfresco courtyard.

### Specifications

Living Area : 194.50 sqm

Porch : 1.99 sqm

Alfresco : 20.03 sqm

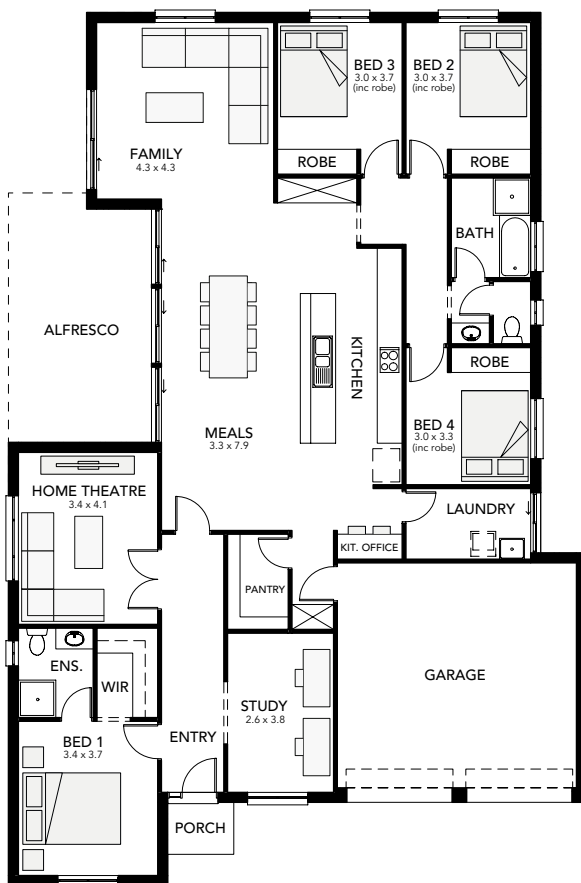
Garage : 34.77 sqm

Total : 251.29 sqm

Width : 13.90m (inc. double garage)

Depth : 21.00m

- four bedrooms
- walk-in robe and ensuite to master bedroom
- built-in robes to beds 2, 3 & 4
- separate study/home office
- designated home theatre
- kitchen office/study nook
- double garage
- internal access to/from garage
- alfresco courtyard with 3 sets of glass sliding doors
- three-way bathroom for added convenience



Myrtle Alfresco at

Wyatt Street  
Lightsview  
Northgate

25 North Terrace  
Hackney, SA 5069  
Phone 8366 0080  
info@statesman-homes.com.au  
www.statesman-homes.com.au  
Builder's Licence No. G8969

Display village open every  
Mon, Wed, Sat and Sun  
from 1pm - 5pm

This floorplan and elevations are for illustration purposes only. Please refer to the working drawings you receive upon signing a contract for precise measurements. To the extent that there is any conflict between the material contained in this brochure and the contract of sale, the purchaser acknowledges that the terms of the contract of sale will at all times prevail.  
© 2017 Statesman Homes. E&OE JUNE 2017.