



**STATESMAN
HOMES**

Welcome to our Moana display home

FEATURING THE FELIXSTOW ALFRESCO



Felixstow Alf.

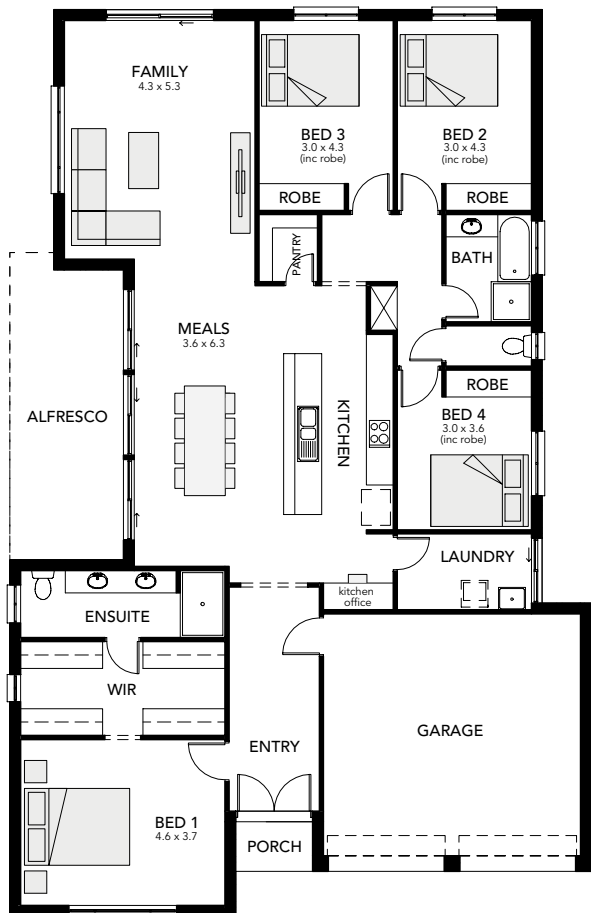
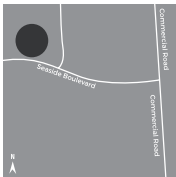
25.36 squares

A spacious family home with walls of glass that bring the outdoors in, complete with a large alfresco.

Specifications

Living Area : 181.81 sqm
 Porch : 1.90 sqm
 Alfresco : 16.84 sqm
 Garage : 35.09 sqm
 Total : 235.64 sqm
 Width : 13.00m (inc. double garage)
 Depth : 20.27m

- four bedrooms
- spacious his and her walk-in robe and ensuite to master bedroom
- large alfresco entertaining area
- internal access from garage
- handy kitchen office
- open-plan kitchen
- double garage



Felixstow Alfresco at

Moana
 Seaside Boulevard
 Seaside
 8366 0000

Display village open every
 Mon, Wed, Sat and Sun
 from 1pm - 5pm

25 North Terrace
 Hackney, SA 5069
 Phone 8366 0080

info@statesman-homes.com.au
 www.statesman-homes.com.au
 Builder's Licence No. G8969

This floorplan and elevations are for illustration purposes only. Please refer to the working drawings you receive upon signing a contract for precise measurements. To the extent that there is any conflict between the material contained in this brochure and the contract of sale, the purchaser acknowledges that the terms of the contract of sale will at all times prevail.
 © 2019 Statesman Homes. E&OE JULY 2019.