



**STATESMAN
HOMES**

**Welcome to our
Clover Park
display home**

FEATURING THE VIRGINIA ALFRESCO SPLIT



Virginia Alf. Split 30.44 squares

With loads of open-plan living and dining space, this design is a favourite for families who need room to grow and room to move!

Specifications

Living Area : 212.59 sqm

Verandah : 6.00 sqm

Alfresco : 23.25 sqm

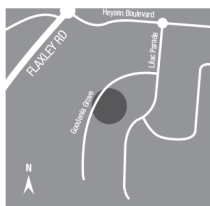
Garage/Mud Room : 40.98 sqm

Total : 282.82 sqm

Width : 16.00m (inc. double garage)

Depth : 19.02m

- four bedrooms
- walk-in robe and ensuite to master bedroom
- built-in robes to beds 2 & 3
- designated home theatre
- double garage
- internal access to/from garage
- alfresco courtyard with 2 sets of glass sliding doors



The Virginia Alfresco
Split at
Mt Barker
Goodenia Grove
Clover Park Estate

Display village open every
Mon, Wed, Sat and Sun
from 1pm - 5pm

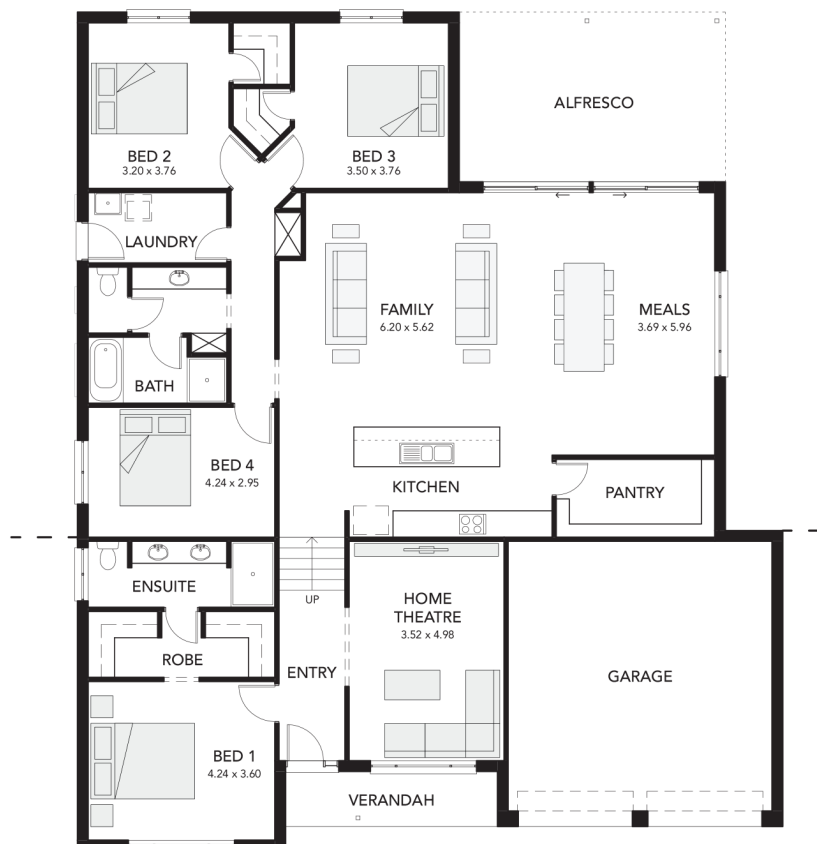
25 North Terrace
Hackney, SA 5069

Phone 8366 0080

info@statesman-homes.com.au

www.statesman-homes.com.au

Builder's Licence No. G8969



This floorplan and elevations are for illustration purposes only. Please refer to the working drawings you receive upon signing a contract for precise measurements. To the extent that there is any conflict between the material contained in this brochure and the contract of sale, the purchaser acknowledges that the terms of the contract of sale will at all times prevail.
© 2020 Statesman Homes. E&OE MARCH 2020.