



**STATESMAN  
HOMES**

# Welcome to our Miravale display home

**FEATURING THE GLENGOWRIE ALFRESCO**



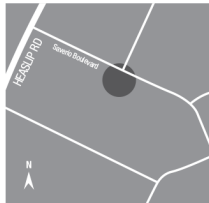
## Glengowrie Alfresco 30.28 squares

This spacious family home features four bedrooms, two living spaces and an alfresco perfect for entertaining.

### Specifications

Living Area : 212.72 sqm  
 Verandah : 6.01 sqm  
 Alfresco : 18.28 sqm  
 Garage/Store : 44.39 sqm  
 Total : 281.40 sqm  
 Width : 16.00m (inc. double garage)  
 Depth : 18.78m

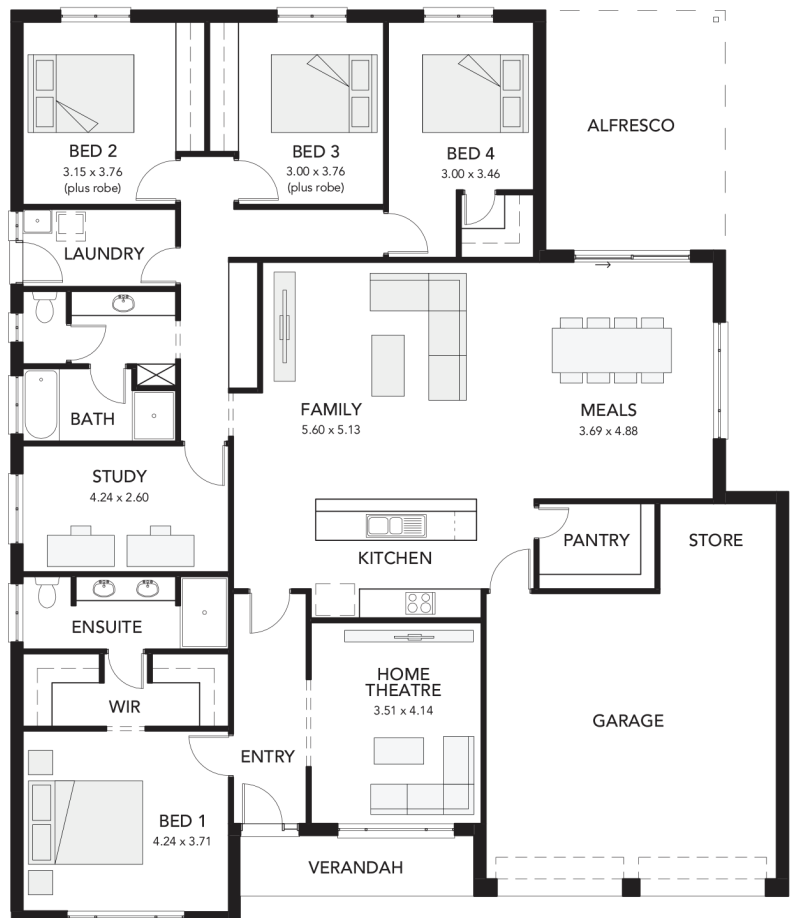
- four bedrooms
- walk-in robe and ensuite to master bedroom
- built-in robes to beds 2, 3 & 4
- designated home theatre
- separate study area
- double garage
- internal access to/from garage
- alfresco courtyard with glass sliding door



Glengowrie  
Alfresco at  
Angle Vale  
Saverio Boulevard  
Miravale Estate

Display village open every  
Mon, Wed, Sat and Sun  
from 1pm - 5pm

25 North Terrace  
Hackney, SA 5069  
Phone 8366 0080  
info@statesman-homes.com.au  
www.statesman-homes.com.au  
Builder's Licence No. G8969



This floorplan and elevations are for illustration purposes only. Please refer to the working drawings you receive upon signing a contract for precise measurements. To the extent that there is any conflict between the material contained in this brochure and the contract of sale, the purchaser acknowledges that the terms of the contract of sale will at all times prevail.  
 © 2020 Statesman Homes. E&OE MAY 2020.