



STATESMAN  
HOMES

# Welcome to The Rise at Victor display homes

FEATURING THE GLENALTA, ADELAIDE MK II, BROOKLYN  
AND ROSTREVOR



## Rostrevor

22.61  
squares

With a huge home theatre, enormous family/meals area and games room, this family home is perfect for entertaining but also offer great value-for-money.

### Specifications

Living Area : 171.86 sqm

Porch : 2.18 sqm

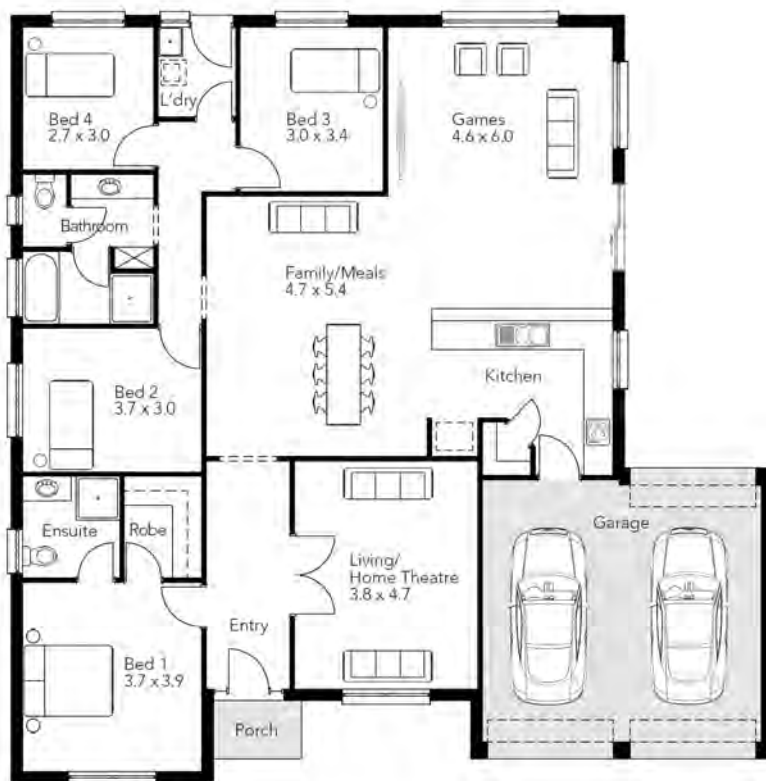
Garage : 36.00 sqm

Total : 210.04 sqm

Width : 15.70m (inc. double garage)

Depth : 15.83m

- four bedrooms
- three generous living areas
- spacious master bedroom featuring ensuite and walk-in robe
- laundry with convenient rear access
- double garage with three roller doors
- internal access to/from garage
- spacious entry to the home
- walk-in pantry







## Adelaide Mk II

30.60  
squares

An executive residence which provides every luxury for modern living including a palatial master bedroom suite.

### Specifications

Living Area : 237.52 sqm

Verandah : 6.38 sqm

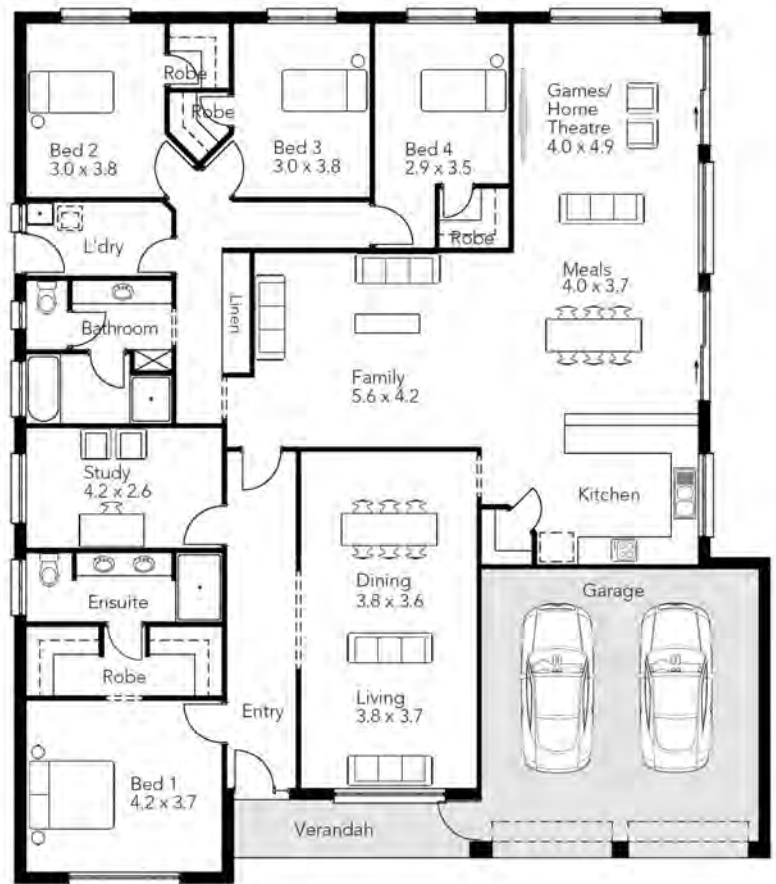
Garage : 40.37 sqm

Total : 284.27 sqm

Width : 16.29m (inc. double garage)

Depth : 18.78m

- four bedrooms
- three spacious living areas
- separate study
- walk-in robes to all bedroom
- convenient three-way bathroom
- double garage
- spacious master bedroom featuring ensuite with double vanity and his and her built-in robes





## Brooklyn

15.92  
squares

It's not hard to see why this home is a best seller – designed to make the most of a narrow block, this home features three bedrooms and two living areas.

### Specifications

Living Area : 129.08 sqm

Porch : 0.82 sqm

Garage : 18.00 sqm

Total : 147.90 sqm

Width : 8.00m (inc. single garage)

Depth : 21.23m

- three bedrooms
- robe provisions to beds 2 & 3
- second living area
- convenient three-way bathroom
- open-plan kitchen with walls of glass
- single garage
- internal access to/from garage
- walk-in robe to master bedroom
- ensuite to master bedroom





## Glenalta

17.91  
squares

The huge open-plan living area at the rear of the home is ideal for keeping the family together, while the good-sized bedrooms and fabulous master bedroom suite provide the perfect space to retreat.

### Specifications

Living Area : 128.96 sqm

Porch : 1.44 sqm

Garage : 36.00 sqm

Total : 166.40 sqm

Width : 11.50m (inc. double garage)

Depth : 18.74m

- three bedrooms
- large open-space kitchen area
- spacious master bedroom featuring ensuite with double vanity and built-in robe
- convenient three-way bathroom
- double garage
- internal access to/from garage
- walk-in pantry





---

See our great homes for yourself

---



Display village open every Monday, Wednesday,  
Saturday and Sunday from 1 - 5pm

Glenalta, Adelaide Mk II, Brooklyn and Rostrevor on display at

**HAYBOROUGH**  
Aquamarine Blvd  
The Rise at Victor  
8554 3038  
UBD 304 K2

# Unbeaten on Price and Quality

---

25 North Terrace Hackney  
South Australia 5069  
Phone 8366 0080  
[info@statesman-homes.com.au](mailto:info@statesman-homes.com.au)  
[www.statesman-homes.com.au](http://www.statesman-homes.com.au)  
Builder's Licence No. G8969

These floorplans and elevations are for illustration purposes only. Please refer to the working drawings you receive upon signing a contract for precise measurements. To the extent that there is any conflict between the material contained in this brochure and the contract of sale, the purchaser acknowledges that the terms of the contract of sale will at all times prevail. Prices may change without notice.  
© 2012 Statesman Homes. E&OE 13.05.12

**STATESMAN**  
HOMES