



**STATESMAN
HOMES**

Welcome to our Virginia Grove display home

FEATURING THE VIRGINIA ALFRESCO



Virginia Alf.

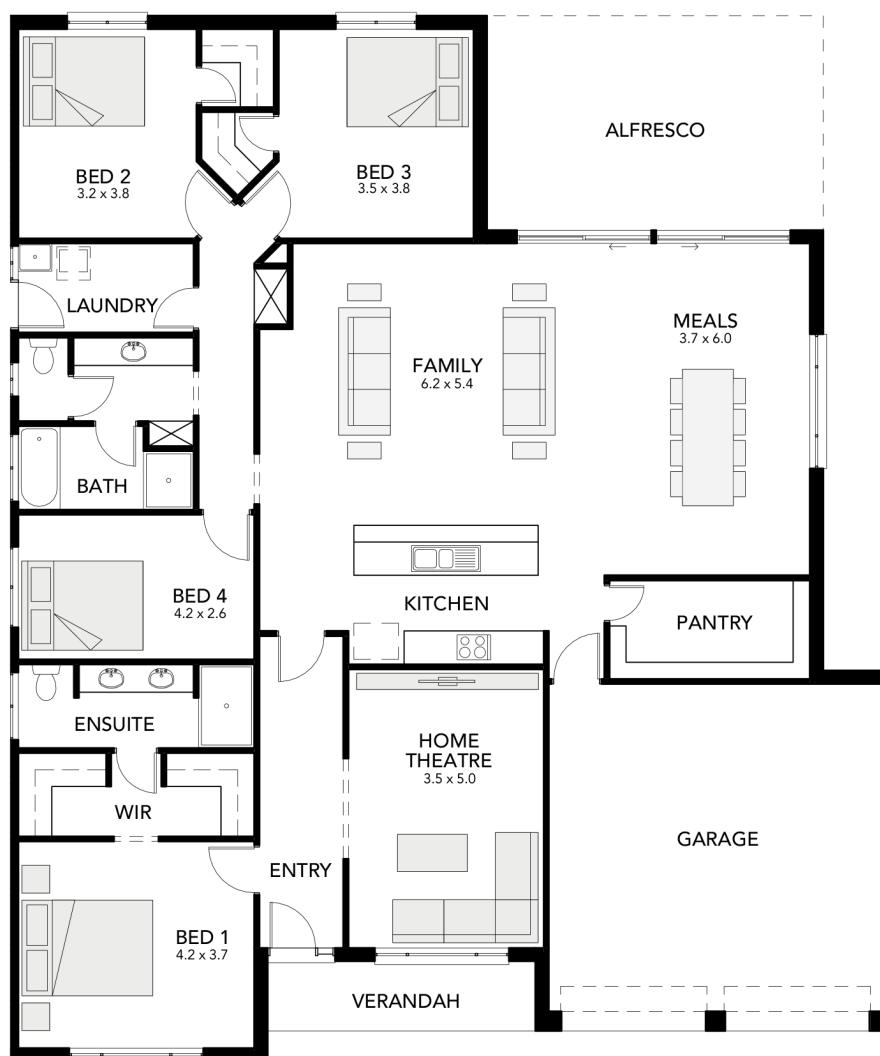
30.02
squares

A brilliant home
complete open plan
kitchen, two living
areas and a huge walk
in pantry!

Specifications

Living Area : 210.25 sqm
Verandah : 6.00 sqm
Garage : 39.48 sqm
Alfresco : 23.25 sqm
Width : 16.00m (inc. double garage)
Depth : 18.78m
Total : 278.98 sqm

- four bedrooms
- open-plan family & meals area featuring large glass sliding doors
- double garage
- separate living area
- walk-in pantry room with shelves
- three-way bathroom with separate toilet



Virginia Alfresco at
Virginia
Juniper Boulevard
Virginia Grove

Display village open every
Mon, Wed, Sat and Sun
from 1pm - 5pm

25 North Terrace
Hackney, SA 5069
Phone 8366 0080
info@statesman-homes.com.au
www.statesman-homes.com.au
Builder's Licence No. G8969

This floorplan and elevations are for illustration purposes only. Please refer to the working drawings you receive upon signing a contract for precise measurements. To the extent that there is any conflict between the material contained in this brochure and the contract of sale, the purchaser acknowledges that the terms of the contract of sale will at all times prevail.
© 2019 Statesman Homes. E&OE JULY 2019.