

House & Land Package



Dorset
17.40
squares

Lot 67A Calton Road,
Gawler East

House and Land from only

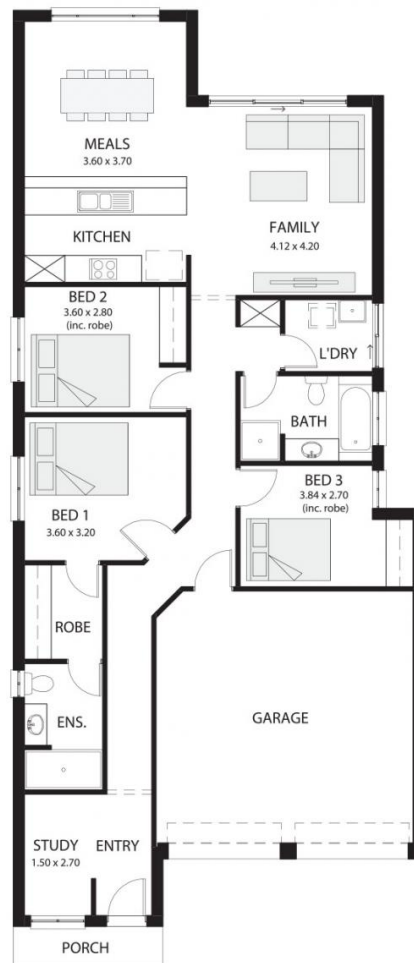
\$282,258*

Specifications

Total: 161.65 sqm
Land Size: 369.00 sqm

You get all this & more...

- Fully fenced by land owner
- Reverse Cycle air-conditioning
- Free whole house termite treatment (50 years Guarantee)
- Ask us about 18 Weeks Build Time
- Generous footing estimation
- 2700mm ceiling height
- Surplus soil removal
- Carpet to bedrooms
- Timber floors to rest of house (not wet areas)
- Stainless steel appliances
- Flat breakfast bar
- Color bond roofing included
- Insulation to external walls and ceiling
- 25-year structural warranty
- 3-month maintenance



STATESMAN
HOMES

Unbeaten
on Price
and Quality

statesman-homes.com.au

Yuki Wang

M 0435 512 921

yukiw@statesman-homes.com.au

08 8366 0080

*Conditions apply. Certain elevations may not match the particular floor plan published in this package and, as such, all floor plans and elevations are for illustration purposes only. Land subject to availability. The land referred to in this promotion is not owned by us. We make no representation and, to the extent permissible at law, we disclaim all liability, as to the suitability of the land to build on, or the suitability of any house design, or otherwise. You must satisfy yourself of that by inspection, or by taking professional advice, or otherwise. Pricing is indicative only and based on standard costings. Price may vary depending on selections, engineering, council and utility requirements and adjustments to allowances. All packages subject to final council approval. Alan Hickinbotham Pty Ltd ABN 13 007 567 222, RLA 230557. Construction Services Australia Pty Ltd ABN 99 007 641 787, Building Licence G8969.