

House & Land Package



Felixstow Alfresco
25.36 squares

Lot 171 Schulze Street,
Freeling 'Freeling'

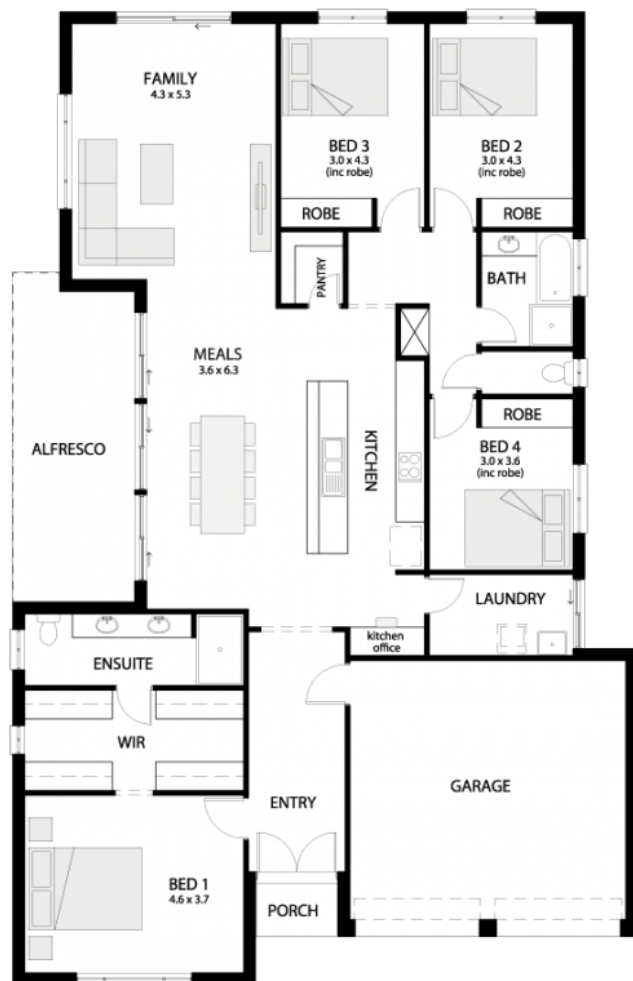
House and Land from only
\$322,300*

Specifications

Total: 235.64 sqm
Land Size: 513.00 sqm

You get all this & more...

- Estate encumbrance requirements met
- 2700mm high ceilings
- Rainwater Provision
- Upgrade to stainless steel
- Colorbond roof and gutters
- WIR to main bedroom
- Mirror door robes to all other bedrooms
- NBN Ready
- Site works and Footings Allowance
- And Many more upgrades
- Turn-Key for \$31,300 extra including:
 - Carpet to all bedrooms and hardwood floor to living
 - Driveway/perimeter paving
 - Ducted Reverse cycle air conditioner
 - Stormwater to curb runoff



Unbeaten
on Price
and Quality

statesman-homes.com.au

Scott Kennedy

M 0414 208 298

scottk@statesman-homes.com.au

08 8366 0080

*Conditions apply. Certain elevations may not match the particular floor plan published in this package and, as such, all floor plans and elevations are for illustration purposes only. Land subject to availability. The land referred to in this promotion is not owned by us. We make no representation and, to the extent permissible at law, we disclaim all liability, as to the suitability of the land to build on, or the suitability of any house design, or otherwise. You must satisfy yourself of that by inspection, or by taking professional advice, or otherwise. Pricing is indicative only and based on standard costings. Price may vary depending on selections, engineering, council and utility requirements and adjustments to allowances. All packages subject to final council approval. Alan Hickinbotham Pty Ltd ABN 13 007 567 222, RLA 230557. Construction Services Australia Pty Ltd ABN 99 007 641 787, Building Licence G8969.