

# House & Land Package



Seacombe Alfresco

26.42  
squares

Lot 219 Melaleuca Way,  
Murray Bridge

House and Land from only

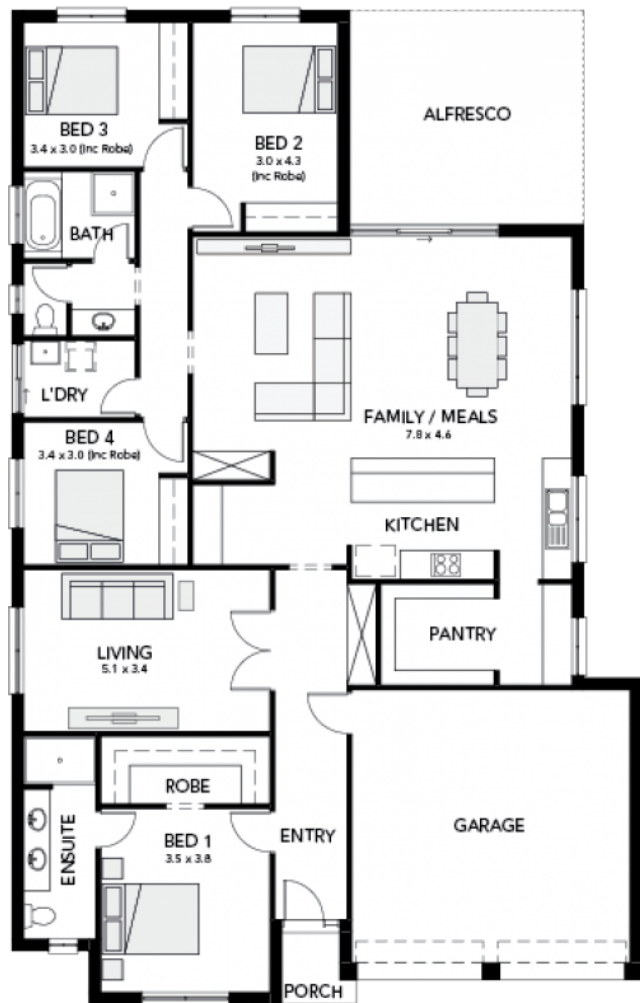
**\$401,900\***

## Specifications

Total: 245.41 sqm  
Land Size: 755.00 sqm

You get all this & more...

- LIMITED TIME FREE AIR CONDITIONING
- 900mm Appliances
- \$15K First Home Buyer
- Floor coverings included!
- 2700mm Ceilings
- Slab to the Alfresco
- Ducted reverse cycle Air-conditioning
- Generous Living Area + Separate Home Theatre
- Built in Robes with drawers and shelving
- Soil removal and generous footings allowance
- Walk-in robe to master bedroom
- Dishwasher and Provisions + Wall Oven
- Double garage included
- Kitchen completed with overhead cupboards
- Generous Walk in Pantry + Store Room
- Ample Back yard
- Stainless steel appliances
- Colour bond roofing upgrade
- Flat breakfast bar
- NBN provision
- Insulation to ceilings and external walls
- 25 years structural warranty & 3 months maintenance



**STATESMAN  
HOMES**

Unbeaten  
on Price  
and Quality

[statesman-homes.com.au](http://statesman-homes.com.au)

**Dallas Chivers**

M 0405 808 434

[dallasc@statesman-homes.com.au](mailto:dallasc@statesman-homes.com.au)

08 8366 0080

\*Conditions apply. Certain elevations may not match the particular floor plan published in this package and, as such, all floor plans and elevations are for illustration purposes only. Land subject to availability. The land referred to in this promotion is not owned by us. We make no representation and, to the extent permissible at law, we disclaim all liability, as to the suitability of the land to build on, or the suitability of any house design, or otherwise. You must satisfy yourself of that by inspection, or by taking professional advice, or otherwise. Pricing is indicative only and based on standard costings. Price may vary depending on selections, engineering, council and utility requirements and adjustments to allowances. All packages subject to final council approval. Alan Hickinbotham Pty Ltd ABN 13 007 567 222, RLA 230557. Construction Services Australia Pty Ltd ABN 99 007 641 787, Building Licence G8969.