

House & Land Package



Clare Alfresco
24.12
squares

Lot 38 New Road,
Nuriootpa

House and Land from only

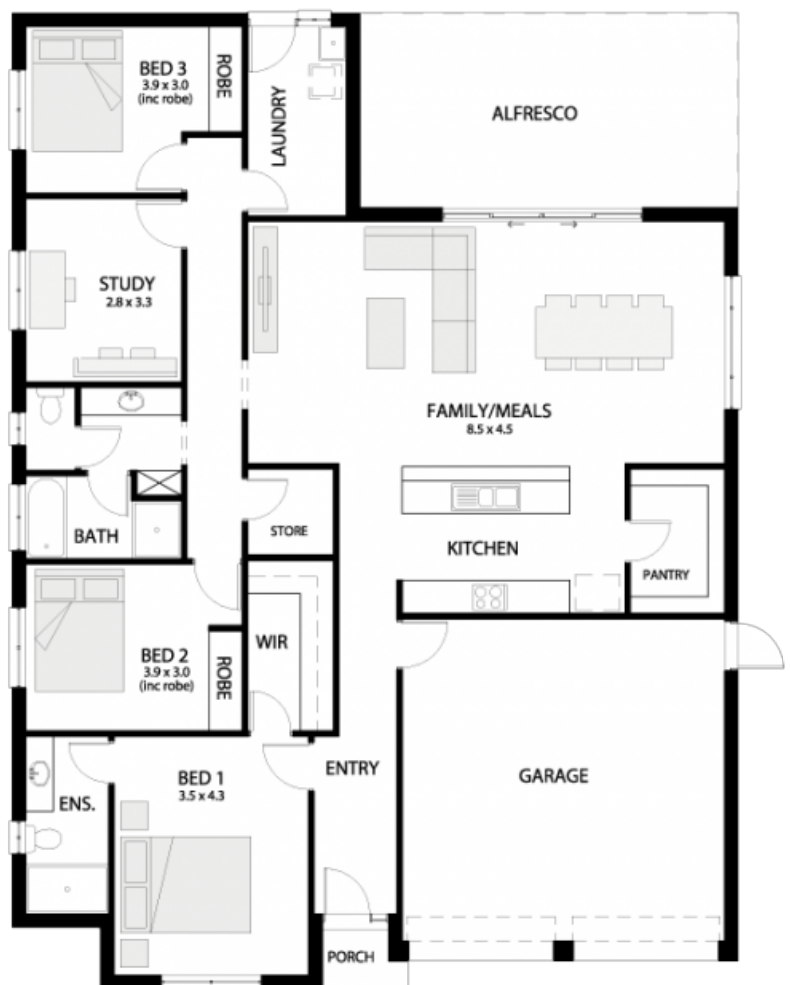
\$452,000*

Specifications

Total: 224.05 sqm
Land Size: 543.00 sqm

You get all this & more...

- Reverse Cycle air-conditioning
- Single span panel lift garage door
- 900mm Westinghouse stainless steel appliances
- Combination of brick and render to facade
- Carpet to bedrooms
- Timber laminate floors to rest of house (not wet areas)
- Insulation to internal and external walls and ceiling
- Footings allowance
- Stormwater allowance
- NBN provision
- 25-year structural warranty
- 3-month maintenance period
- 2700mm high ceilings
- Colorbond roof



STATESMAN
HOMES

Unbeaten
on Price
and Quality

statesman-homes.com.au

Alex Stojanovski

M 0490 191 143

alexs@statesman-homes.com.au

08 8366 0080

*Conditions apply. Certain elevations may not match the particular floor plan published in this package and, as such, all floor plans and elevations are for illustration purposes only. Land subject to availability. The land referred to in this promotion is not owned by us. We make no representation and, to the extent permissible at law, we disclaim all liability, as to the suitability of the land to build on, or the suitability of any house design, or otherwise. You must satisfy yourself of that by inspection, or by taking professional advice, or otherwise. Pricing is indicative only and based on standard costings. Price may vary depending on selections, engineering, council and utility requirements and adjustments to allowances. All packages subject to final council approval. Alan Hickinbotham Pty Ltd ABN 13 007 567 222, RLA 230557. Construction Services Australia Pty Ltd ABN 99 007 641 787, Building Licence G8969.