

# House & Land Package



Evandale  
15.37  
squares

Lot 728 Lily Street,  
Eyre

House and Land from only

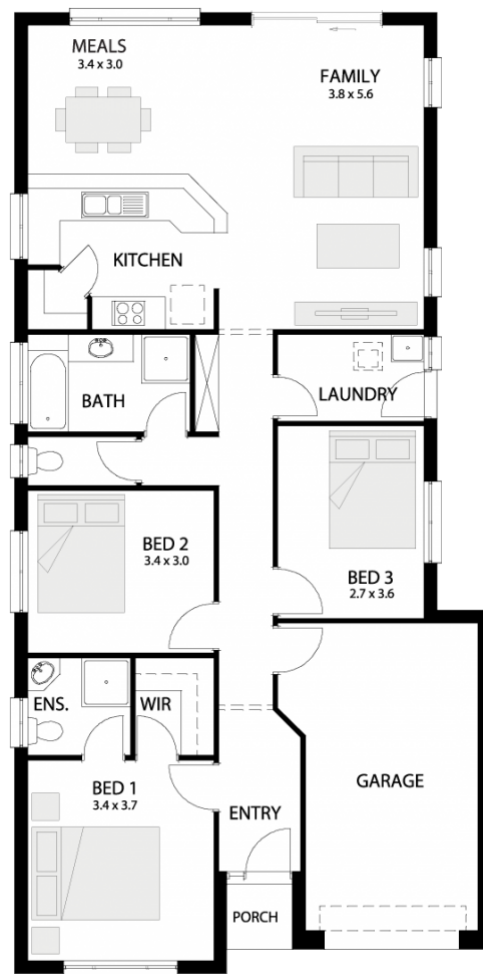
**\$373,637\***

## Specifications

Total: 142.77 sqm  
Land Size: 315.00 sqm

## You get all this & more...

- Car accommodation (as pictured)
- 2700mm ceilings
- Ducted reverse cycle air conditioning
- Stormwater connection
- Driveway and perimeter paths
- Carpet and timber flooring
- Ceiling and external wall insulation
- Overhead cupboards in kitchen
- Dishwasher provision
- Stainless steel appliances
- Flat breakfast bar
- Rainwater tank by-pass system
- NBN connection (if applicable)
- Siteworks and footings
- 3 month maintenance period & 25 year structural guarantee



**STATESMAN**  
HOMES

Unbeaten  
on Price  
and Quality

[statesman-homes.com.au](http://statesman-homes.com.au)

**Michael Metcalfe**

M 0407 504 122

[michael@statesman-homes.com.au](mailto:michael@statesman-homes.com.au)

08 8366 0080

\*Conditions apply. Certain elevations may not match the particular floor plan published in this package and, as such, all floor plans and elevations are for illustration purposes only. Land subject to availability. The land referred to in this promotion is not owned by us. We make no representation and, to the extent permissible at law, we disclaim all liability, as to the suitability of the land to build on, or the suitability of any house design, or otherwise. You must satisfy yourself of that by inspection, or by taking professional advice, or otherwise. Pricing is indicative only and based on standard costings. Price may vary depending on selections, engineering, council and utility requirements and adjustments to allowances. All packages subject to final council approval. Alan Hickinbotham Pty Ltd ABN 13 007 567 222, RLA 230557. Construction Services Australia Pty Ltd ABN 99 007 641 787, Building Licence G8969.