

House & Land Package



Kidman
17.34
squares

Lot 2049 Glenlea Boulevard,
Mount Barker 'Glenlea'

House and Land from only

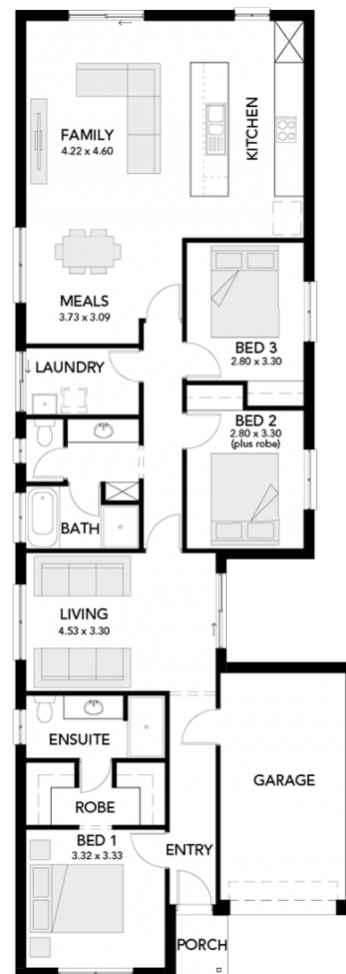
\$443,485*

Specifications

Total: 161.08 sqm
Land Size: 320.00 sqm

You get all this & more...

- Benched villa block in the picturesque Glenlea development
- Generous 32m depth for a bigger rear garden
- 2.7m ceilings throughout
- Ducted reverse cycle air conditioning
- Flooring throughout included
- Generous siteworks and footings allowance included
- Upgraded facade to meet encumbrance requirements
- Auto garage door
- Stainless steel appliances & free dishwasher
- Overheads to kitchen
- Fully insulated
- Stormwater connection allowance included
- Plan can be modified to suit personal requirements
- Other designs available and suitable for this block
- Statesman Homes: Unbeaten on price and quality
- Generous discounts or promotions available, STTC



STATESMAN
HOMES

Unbeaten
on Price
and Quality

statesman-homes.com.au

Andy Killick

M 0406 874 467

andyk@statesman-homes.com.au

08 8366 0080

*Conditions apply. Certain elevations may not match the particular floor plan published in this package and, as such, all floor plans and elevations are for illustration purposes only. Land subject to availability. The land referred to in this promotion is not owned by us. We make no representation and, to the extent permissible at law, we disclaim all liability, as to the suitability of the land to build on, or the suitability of any house design, or otherwise. You must satisfy yourself of that by inspection, or by taking professional advice, or otherwise. Pricing is indicative only and based on standard costings. Price may vary depending on selections, engineering, council and utility requirements and adjustments to allowances. All packages subject to final council approval. Alan Hickinbotham Pty Ltd ABN 13 007 567 222, RLA 230557. Construction Services Australia Pty Ltd ABN 99 007 641 787, Building Licence G8969.