

# House & Land Package



Evandale  
15.37  
squares

Lot 1142 Mainwaring Crescent,  
Davoren Park 'Playford Alive'

House and Land from only

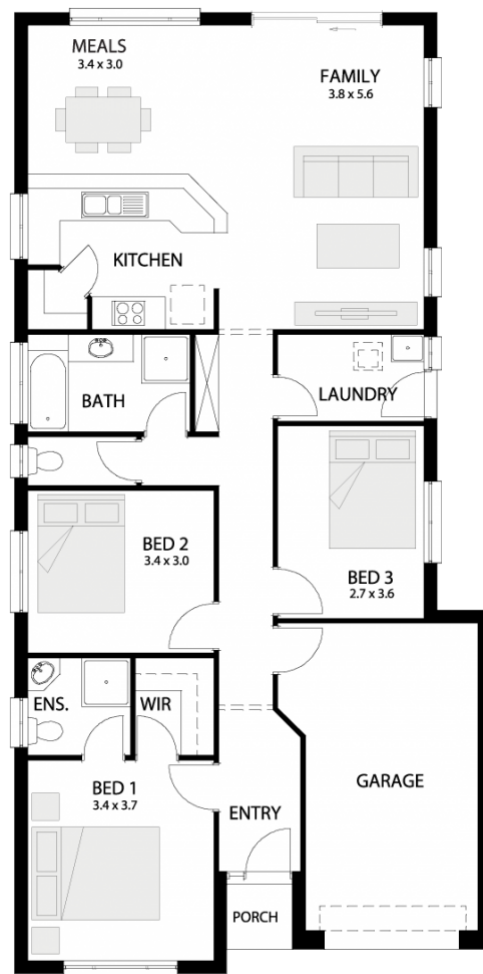
**\$342,871\***

## Specifications

Total: 142.77 sqm  
Land Size: 380.00 sqm

## You get all this & more...

- \*\*\*MANY more designs and CUSTOM designs available\*\*\*
- Ideal investment opportunity for first time or seasoned investors!
- LIMITED TIME \$10K discount applied!!!
- 2700mm high ceilings!
- Fencing and front yard landscaping included!
- Ducted reverse cycle Air-conditioning
- Colourbond roof!
- Floor covering included!!!
- Soil removal and generous footings allowance
- Kitchen completed with overhead cupboards
- Stainless steel appliances
- Walk-in robe to master bedroom
- Single garage included
- Flat breakfast bar
- NBN ready!
- Insulation to ceilings and external walls
- 25 years structural warranty
- 3 months maintenance
- Storm water and much more!!!



**STATESMAN  
HOMES**

Unbeaten  
on Price  
and Quality

[statesman-homes.com.au](http://statesman-homes.com.au)

**Roshan Kulatunga**

M 0415 544 058

[roshank@statesman-homes.com.au](mailto:roshank@statesman-homes.com.au)

08 8366 0080

\*Conditions apply. Certain elevations may not match the particular floor plan published in this package and, as such, all floor plans and elevations are for illustration purposes only. Land subject to availability. The land referred to in this promotion is not owned by us. We make no representation and, to the extent permissible at law, we disclaim all liability, as to the suitability of the land to build on, or the suitability of any house design, or otherwise. You must satisfy yourself of that by inspection, or by taking professional advice, or otherwise. Pricing is indicative only and based on standard costings. Price may vary depending on selections, engineering, council and utility requirements and adjustments to allowances. All packages subject to final council approval. Alan Hickinbotham Pty Ltd ABN 13 007 567 222, RLA 230557. Construction Services Australia Pty Ltd ABN 99 007 641 787, Building Licence G8969.