

House & Land Package



Findon Alfresco
21.52
squares

Lot 142 Correa Street ,
Munno Para Downs

House and Land from only

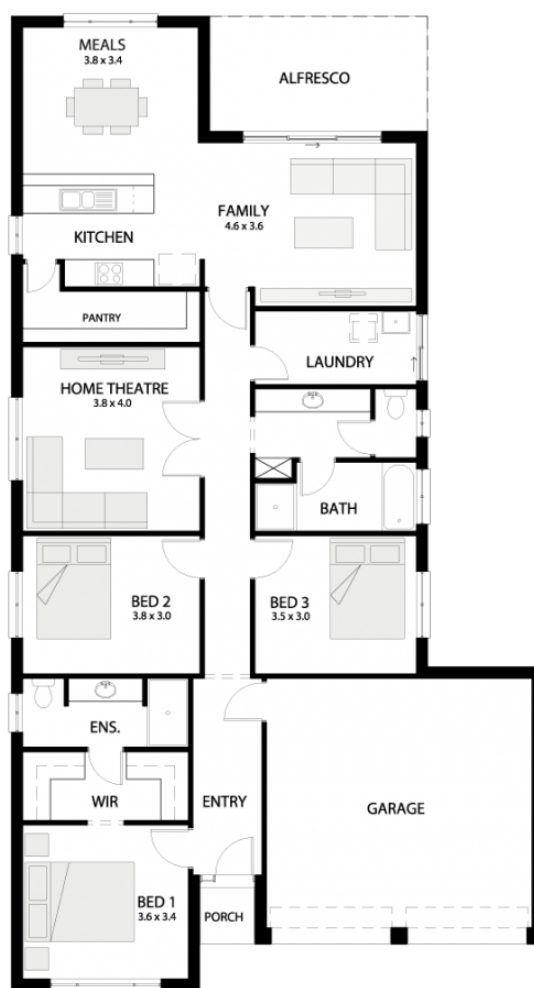
\$509,188*

Specifications

Total: 199.97 sqm
Land Size: 405.00 sqm

You get all this & more...

- CHOICE OF ELEVATION AND FLEXIBLE FLOORPLAN LAYOUT
- LIMITED TIME \$12K Discount Applied
- Double Garage with panel lift door and remote
- Style Series Facade Allowance
- 2.7m ceilings
- Overhead cupboards to kitchen and over fridge provision
- Flooring Provisions Timber Laminate and Carpet
- Dishwasher provision: FREE Dishwasher
- 900mm Westinghouse Appliances
- NBN Connection
- Tiled wet areas and carpet and timber laminate to remainder
- Keylocks to sliding windows
- Termite protection
- Instantaneous hot water system
- Ducted reverse cycle heating & cooling
- Generous footings and site works estimate
- Insulation to external walls and ceilings
- Colourbond Roof, Fascia and Gutters
- 25 year structural guarantee and 3 month maintenance period.



STATESMAN
HOMES

Unbeaten
on Price
and Quality

statesman-homes.com.au

Dallas Chivers

M 0405 808 434

dallasc@statesman-homes.com.au

08 8366 0080

*Conditions apply. Certain elevations may not match the particular floor plan published in this package and, as such, all floor plans and elevations are for illustration purposes only. Land subject to availability. The land referred to in this promotion is not owned by us. We make no representation and, to the extent permissible at law, we disclaim all liability, as to the suitability of the land to build on, or the suitability of any house design, or otherwise. You must satisfy yourself of that by inspection, or by taking professional advice, or otherwise. Pricing is indicative only and based on standard costings. Price may vary depending on selections, engineering, council and utility requirements and adjustments to allowances. All packages subject to final council approval. Alan Hickinbotham Pty Ltd ABN 13 007 567 222, RLA 230557. Construction Services Australia Pty Ltd ABN 99 007 641 787, Building Licence G8969.