

# House & Land Package



Kidman  
17.34  
squares

Lot 636 Martindale Way,  
Andrews Farm 'St Andrews'

House and Land from only

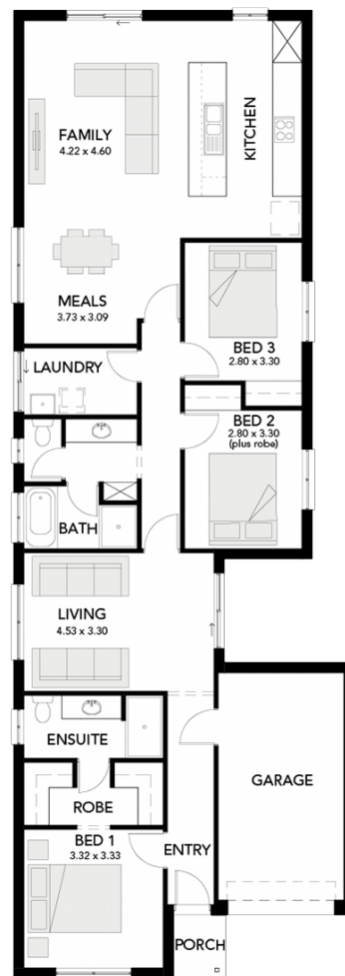
**\$515,926\***

## Specifications

Total: 161.08 sqm  
Land Size: 311.00 sqm

You get all this & more...

- Current Promotions!- Call for info
- 2.7m high ceilings
- Double garage with upgraded single panel lift door & remote
- Reverse cycle ducted air-conditioning
- Choice of style series facade
- Carpet to bedrooms
- Timber flooring to living
- Tiling to wet areas
- BIR to all bedrooms, WIR to master
- Insulation throughout
- Footings & Site cost estimate inc.
- 25 Year Structural Guarantee!



**STATESMAN**  
HOMES

Unbeaten  
on Price  
and Quality

[statesman-homes.com.au](http://statesman-homes.com.au)

**Sallyanne Sintenie**

M 0450 404 213

[sallyannes@statesman-homes.com.au](mailto:sallyannes@statesman-homes.com.au)

08 8366 0080

\*Conditions apply. Certain elevations may not match the particular floor plan published in this package and, as such, all floor plans and elevations are for illustration purposes only. Land subject to availability. The land referred to in this promotion is not owned by us. We make no representation and, to the extent permissible at law, we disclaim all liability, as to the suitability of the land to build on, or the suitability of any house design, or otherwise. You must satisfy yourself of that by inspection, or by taking professional advice, or otherwise. Pricing is indicative only and based on standard costings. Price may vary depending on selections, engineering, council and utility requirements and adjustments to allowances. All packages subject to final council approval. Alan Hickinbotham Pty Ltd ABN 13 007 567 222, RLA 230557. Construction Services Australia Pty Ltd ABN 99 007 641 787, Building Licence G8969.