

House & Land Package



Felixstow Alfresco
25.36
squares

Lot 74 Whitehaven Circuit,
Aldinga Beach 'Aldinga Green'

House and Land from only

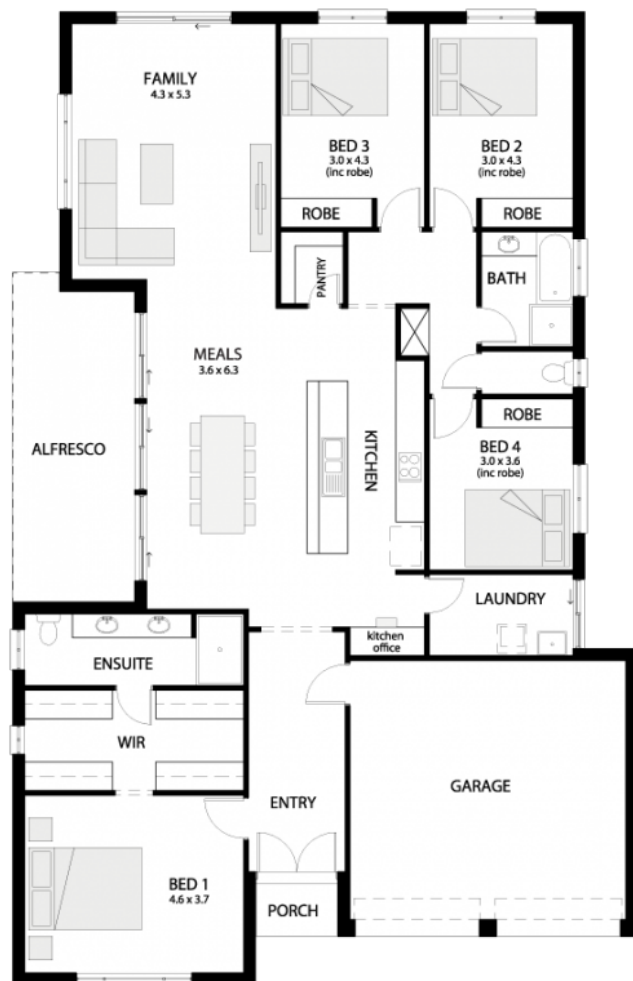
\$719,890*

Specifications

Total: 235.64 sqm
Land Size: 571.00 sqm

You get all this & more...

- Package can be tailored to suit your exact requirements
- Call for details on the latest promotion
- custom floorplans & modifications available
- In house finance available
- Elevation upgrade included
- 2700mm ceilings
- Insulation throughout
- Flooring throughout
- laundry joinery
- Ducted reverse cycle air-conditioning throughout
- 50 year termite warranty
- 25 year structural guarantee
- Siteworks and footings included



STATESMAN
HOMES

Unbeaten
on Price
and Quality

statesman-homes.com.au

Anthony Tovey

M 0403 746 675

anthony@statesman-homes.com.au

08 8366 0080

*Conditions apply. Certain elevations may not match the particular floor plan published in this package and, as such, all floor plans and elevations are for illustration purposes only. Land subject to availability. We make no representation and, to the extent permissible at law, we disclaim all liability, as to the suitability of the land to build on, or the suitability of any house design, or otherwise. You must satisfy yourself of that by inspection, or by taking professional advice, or otherwise. Pricing is indicative only and based on standard costings. Price may vary depending on selections, engineering, council and utility requirements and adjustments to allowances. All packages subject to final council approval. Alan Hickinbotham Pty Ltd ABN 13 007 567 222, RLA 230557. Construction Services Australia Pty Ltd ABN 99 007 641 787, Building Licence G8969.