

House & Land Package

🏠 2 🛏️ 4 🚿 2 🚗 2



Lot 1220 Barbata Court,
Riverlea Park 'Riverlea'

House & Land from only

\$624,248*

Specifications

Design: Moonta

Total : 248.97 sqm

Land Size: 480.00m²

You get all this & more

- Perfect DEARM HOME in PRIME location!
- HURRY! LAND WILL NOT LAST!!!
- LIMITED TIME \$10K discount applied!!!
- Ducted reverse cycle Air-conditioning
- 2700mm ceilings!
- Portico with rendered piers and rendered portico infill
- Double garage with auto single span lift door
- Alfresco included with slab and tiles!
- Fully furnished laundry with massive storage!
- Walk in robe at master bedroom and built in robes bedrooms 2, 3 and 4
- Floor coverings included with carpets at Beds and timber laminate to remainder!
- Stainless steel appliances
- Butler pantry with floor cupboards and shelving
- Colour bond roofing upgrade included
- NBN provision
- Insulation to ceilings & external walls!
- 25 years structural warranty & 3 months maintenance and much more!!!

STATESMAN
HOMES

08 8366 0080

statesman-homes.com.au

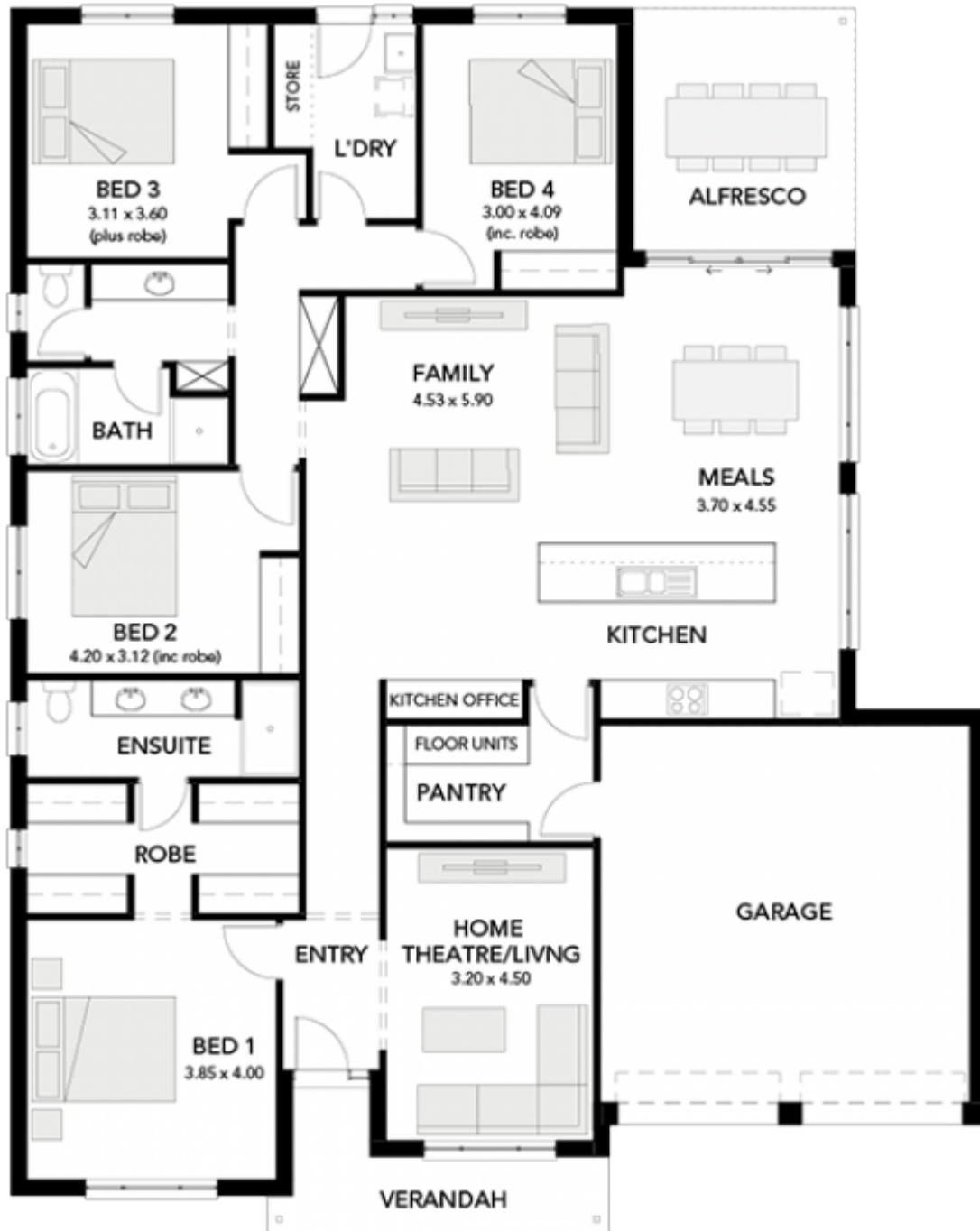
Roshan Kulatunga

M 0415 544 058

roshank@statesman-homes.com.au

House & Land Package

2 4 2 2



**STATESMAN
HOMES**

*Conditions apply. Certain elevations may not match the particular floor plan published in this package and, as such, all floor plans and elevations are for illustration purposes only. Land subject to availability. The land referred to in this promotion is not owned by us. We make no representation and, to the extent permissible at law, we disclaim all liability, as to the suitability of the land to build on, or the suitability of any house design, or otherwise. You must satisfy yourself of that by inspection, or by taking professional advice, or otherwise. Pricing is indicative only and based on standard costings. Price may vary depending on selections, engineering, council and utility requirements and adjustments to allowances. All packages subject to final council approval. Alan Hickinbotham Pty Ltd ABN 13 007 567 222, RLA 230557. Construction Services Australia Pty Ltd ABN 99 007 641 787, Building Licence G8969.