

House & Land Package

2 4 2 2



Lot 405 New Road
Gracewood,
Mallala 'Gracewood'

House & Land from only

\$546,600*

Specifications

Design: Seacombe Alfresco

Porch: 1.98m²

Alfresco: 21.35m²

Garage : 36.41m²

Total : 245.41 sqm

Land Size: 460.00m²

You get all this & more

- FLEXIBLE LAYOUT OPTIONS & CHOICE OF FACADE
- Ducted reverse Cycle air-conditioning
- Carpet to bedrooms
- Timber floors to rest of house (not wet areas)
- Upgraded to Westinghouse Retractable Rangehood
- Upgraded 600mm stainless steel appliances
- 2700mm High ceilings
- Colourbond roofing included
- Insulation to external walls and ceiling
- Generous footings allowance included
- NBN provision
- 25 year structural warranty
- 3 month maintenance check
- Package includes a \$10K Cash Discount Promotion *subject to eligibility

STATESMAN
HOMES

08 8366 0080

statesman-homes.com.au

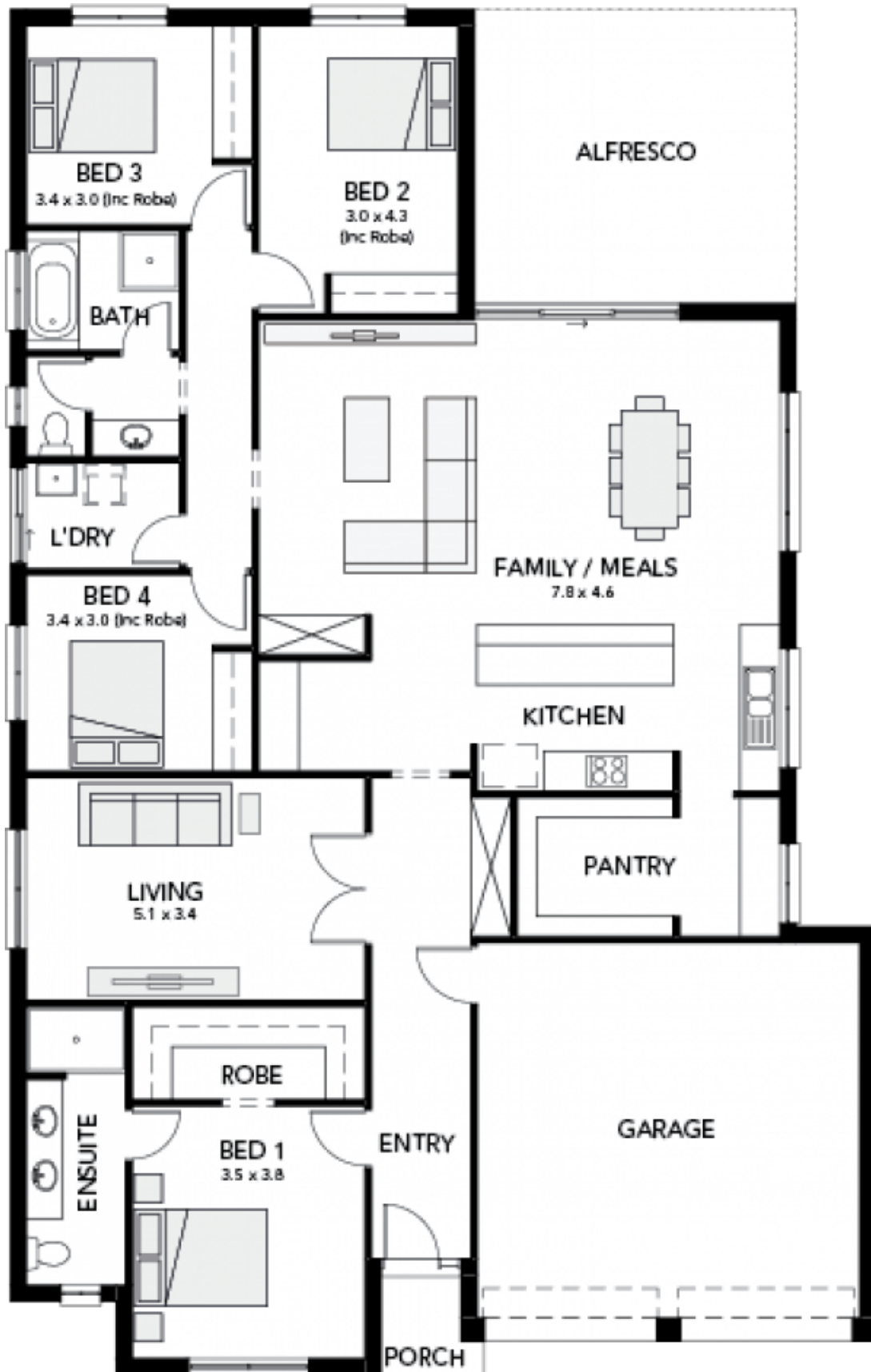
Lee Northam

M 0435 419 739

leen@statesman-homes.com.au

House & Land Package

2 4 2 2



**STATESMAN
HOMES**

*Conditions apply. Certain elevations may not match the particular floor plan published in this package and, as such, all floor plans and elevations are for illustration purposes only. Land subject to availability. The land referred to in this promotion is not owned by us. We make no representation and, to the extent permissible at law, we disclaim all liability, as to the suitability of the land to build on, or the suitability of any house design, or otherwise. You must satisfy yourself of that by inspection, or by taking professional advice, or otherwise. Pricing is indicative only and based on standard costings. Price may vary depending on selections, engineering, council and utility requirements and adjustments to allowances. All packages subject to final council approval. Alan Hickinbotham Pty Ltd ABN 13 007 567 222, RLA 230557. Construction Services Australia Pty Ltd ABN 99 007 641 787, Building Licence G8969.