

House & Land Package

2 2 3 1



Lot 128 Sparrow Court,
Mount Barker 'Springbrook'

House & Land from only

\$613,000*

Specifications

Design: Brio 3.5
Living Area : 149.96m²
Porch: 3.00m²
Garage : 20.08m²
Total : 173.04 sqm
Land Size: 368.00m²

You get all this & more

- 25 degree roof pitch
- Colourbond roof, fascias and gutters
- Garage including piers and panel lift colourbond garage door
- 2700mm high ceilings
- Quality carpet to bedrooms, study and home theatres
- On-trend timber-style flooring to front entry, rear hallway, family, kitchen and meals
- Westinghouse WVE915SCA (900mm) electric oven
- Westinghouse WHG954SC (900mm) gas cooktop
- Westinghouse WRR904SB (900mm dual fan) retractable rangehood ducted to atmosphere
- Plumbed water point for fridge
- Stainless steel dishwasher
- 20mm designer solid benchtops
- Full height wall tiling to bathroom and ensuite with 1200mm high tiling to separate WC/ vanities
- 900mm high mirror full length of vanity to bathroom and ensuite
- Walk-in robe with double shelf and hanging rail
- Drawer units to walk-in-robe
- 3 month warranty period and 25 year structural guarantee

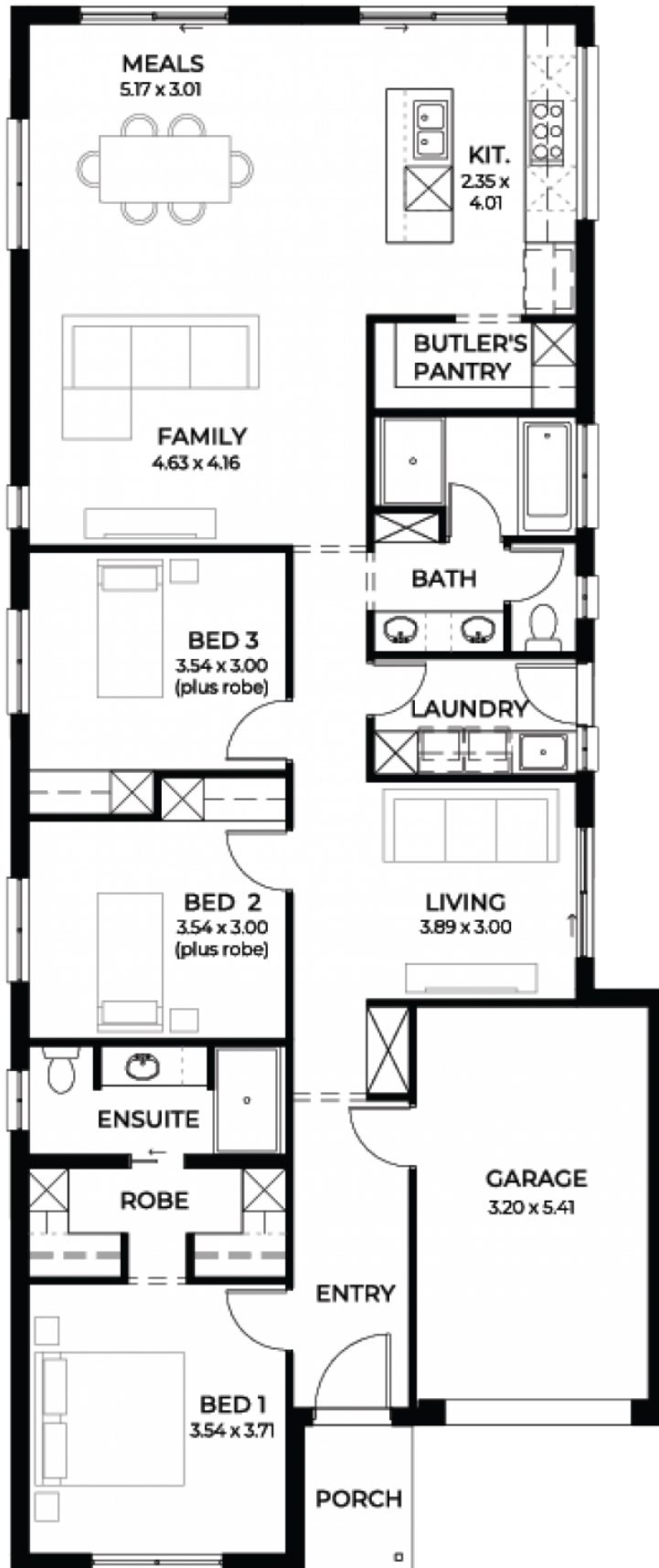
**STATESMAN
HOMES**

08 8366 0080
statesman-homes.com.au

Alex Stojanovski
M 0490 191 143
alexs@statesman-homes.com.au

House & Land Package

2 2 3 1



**STATESMAN
HOMES**

*Conditions apply. Certain elevations may not match the particular floor plan published in this package and, as such, all floor plans and elevations are for illustration purposes only. Land subject to availability. The land referred to in this promotion is not owned by us. We make no representation and, to the extent permissible at law, we disclaim all liability, as to the suitability of the land to build on, or the suitability of any house design, or otherwise. You must satisfy yourself of that by inspection, or by taking professional advice, or otherwise. Pricing is indicative only and based on standard costings. Price may vary depending on selections, engineering, council and utility requirements and adjustments to allowances. All packages subject to final council approval. Alan Hickinbotham Pty Ltd ABN 13 007 567 222, RLA 230557. Construction Services Australia Pty Ltd ABN 99 007 641 787, Building Licence G8969.