

Lyra3.5

House and Land from

\$647,430*

LOT 8
COPPERHEAD ROAD ,
WALLAROO

Lot Size: 620.00m²
House Size 243.60m² / 26.22sqqs
Width 12.90m (incl. garage)
Elevation: Domaine 02 - 12.5

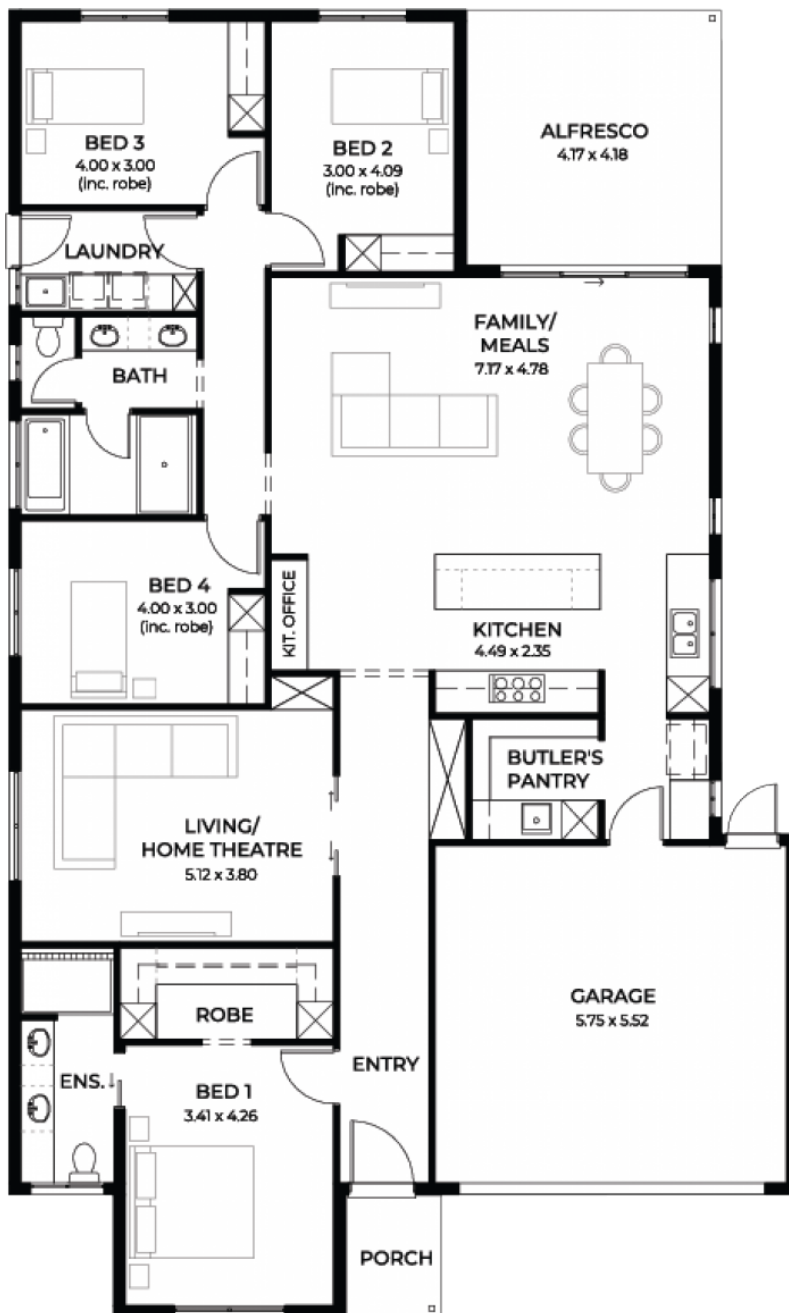


2

4

2

2



**STATESMAN
HOMES**

08 8366 0080
statesman-homes.com.au

Dallas Chivers M 0405 808 434
dallasc@statesman-homes.com.au

* Terms and Condition's apply. For full details go to statesman-homes.com.au/terms-and-conditions/

These exceptional features are just the beginning

Located a stone's throw from the glistening sands and crystal waters of North Beach Wallaroo, in the new released Copper Sands, bought to you by Ray White.

This luxurious home is all-inclusive, packed with features for the growing family is great value and well thought out.

INCLUSIONS:

\$17K promotional discount on build price for a limited time only

Designer front facade

2.7m high ceiling

Automatic remote controlled panel lift

Colorbond garage door

Tiles to verandah / porch / alfresco

Aluminium powder coated awning windows to main living areas and sliding windows to the remainder, including keylocks

Flyscreens to all windows

2340mm high Hume XN5 translucent glazed front door

Luxe carpet to bedrooms, home theatres and rear hallways

Luxe timber laminate to front entry, family, kitchen and meals

Ducted reverse cycle air conditioning with Wi-Fi controller

Safety lighting throughout

900mm Westinghouse appliances

20mm solid surface benchtop to kitchen

Pot drawers, kitchen bin with pull out drawer, under bench microwave provision with pot drawer, soft close runners and hinges, HiFlow water filter included

Recessed kickers and drawer units to vanities

Floor to ceiling tiling

Basis back to wall dual flush toilet suites with soft close

45 litre inset trough, broom cupboard and bin and 300mm deep overheads with handing rail to laundry

3 month warranty period and 25 year structural guarantee