

# Halcyon 5.0

House and Land from  
**\$640,000\***

LOT 312  
OCEANIC CRESCENT,  
ENCOUNTER BAY

Lot Size: 450.00m<sup>2</sup>  
House Size: 212.67m<sup>2</sup> / 22.89sqgs  
Width: 11.40m (incl. garage)  
Elevation: Domaine 01 - 12.5



2



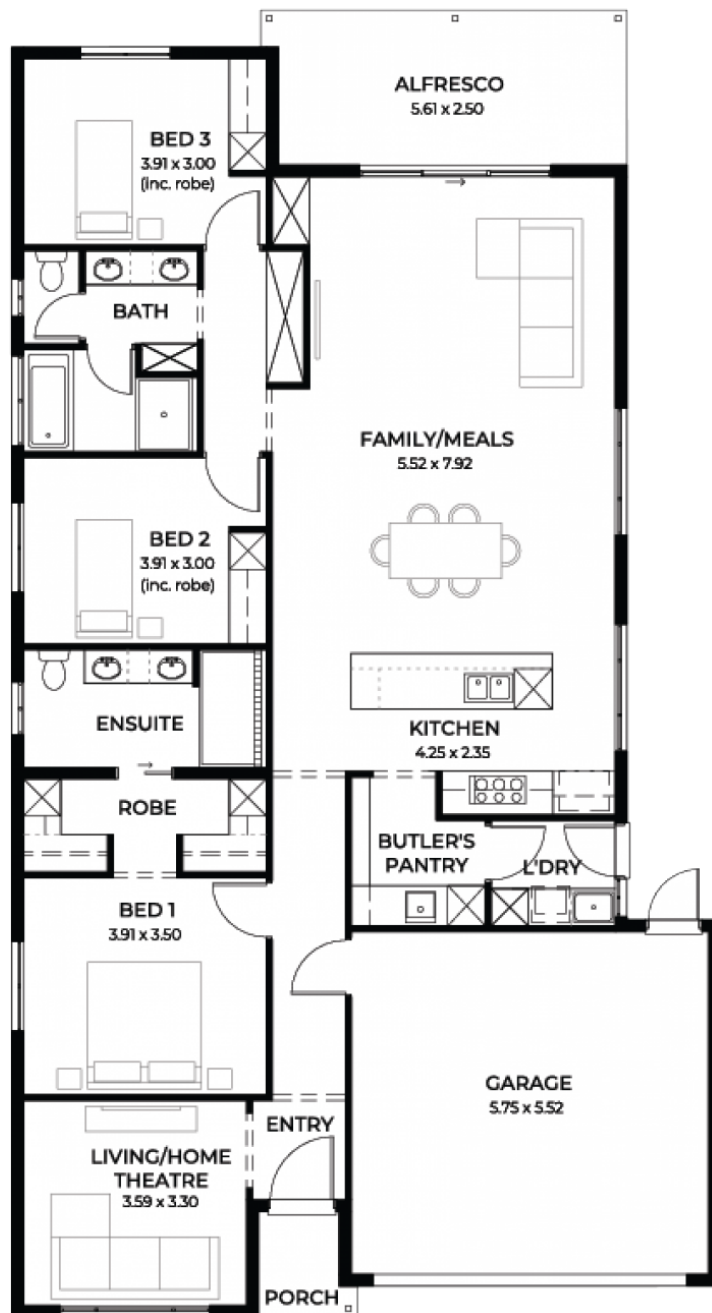
3



2



2



**STATESMAN  
HOMES**

08 8366 0080  
statesman-homes.com.au

Alex Stojanovski M 0490 191 143  
alexs@statesman-homes.com.au

\* Terms and Condition's apply. For full details go to [statesman-homes.com.au/terms-and-conditions/](https://statesman-homes.com.au/terms-and-conditions/)

# These exceptional features are just the beginning

Designer facade

2.7m ceilings

4kW solar system

20mm solid surface to kitchen

Westinghouse appliances

Soft close runners and hinges

Shower ledges to bathroom and ensuite

All storage included (as per plan)

Carpet to bedrooms

Timber laminate to remainder of home

Fully insulated

Footings allowance

3 month warranty period

25 year structural guarantee

---

**STATESMAN**  
H O M E S

08 8366 0080  
statesman-homes.com.au

Alex Stojanovski M 0490 191 143  
alexs@statesman-homes.com.au