

Lyra5.0

House and Land from
\$655,600*

LOT 17
TROON DRIVE ,
NORMANVILLE

Lot Size: 537.00m²
House Size 243.53m² / 26.21sqs
Width 12.90m (incl. garage)
Elevation: Domaine 10 - 12.5



2



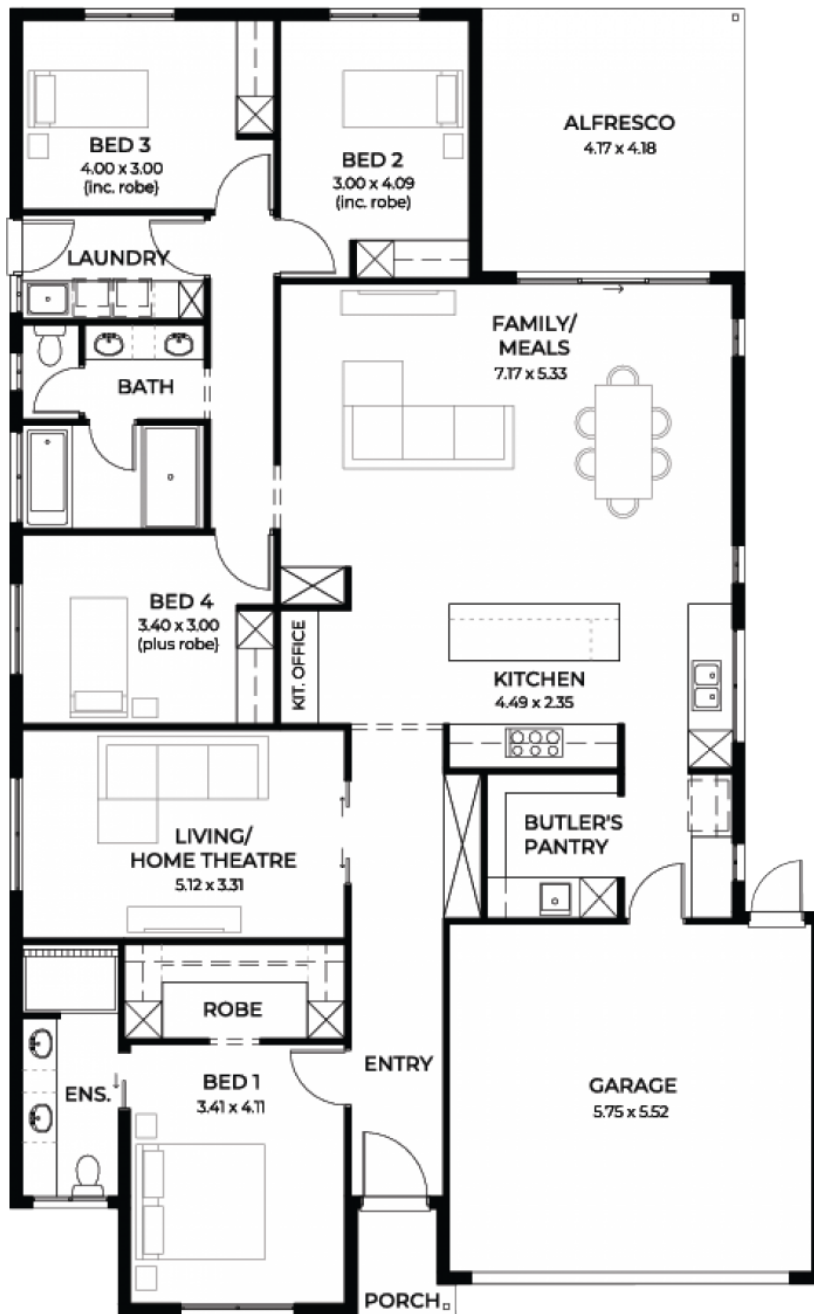
4



2



2



**STATESMAN
HOMES**

08 8366 0080
statesman-homes.com.au

Simon Pakula M 0421 833 157
simon@statesman-homes.com.au

* Terms and Condition's apply. For full details go to statesman-homes.com.au/terms-and-conditions/

These exceptional features are just the beginning

2.7m High Ceilings

Ducted reverse cycle air conditioning

Carpet to bedrooms and home theatre

Timber laminate to living areas and entry

Stormwater as per siteworks and draining plan

Paved driveway and perimeter paths

Tiles to wet areas full height

Caesarstone kitchen benchtops with slab ends

Premium kitchen and bathroom accessories

2340mm high doors

4kw solar system

Westinghouse 900mm wide appliances
kitchen

STATESMAN
HOMES

08 8366 0080
statesman-homes.com.au

Simon Pakula M 0421 833 157
simon@statesman-homes.com.au