

Dulcet 3.5

House and Land from
\$542,000*

LOT 525
NEW ROAD,
MALLALA
'GRACEWOOD'

Lot Size: 400.00m²
House Size: 215.04m² / 23.14sqs
Width: 11.40m (incl. garage)
Elevation: Domaine 04 - 12.5



1



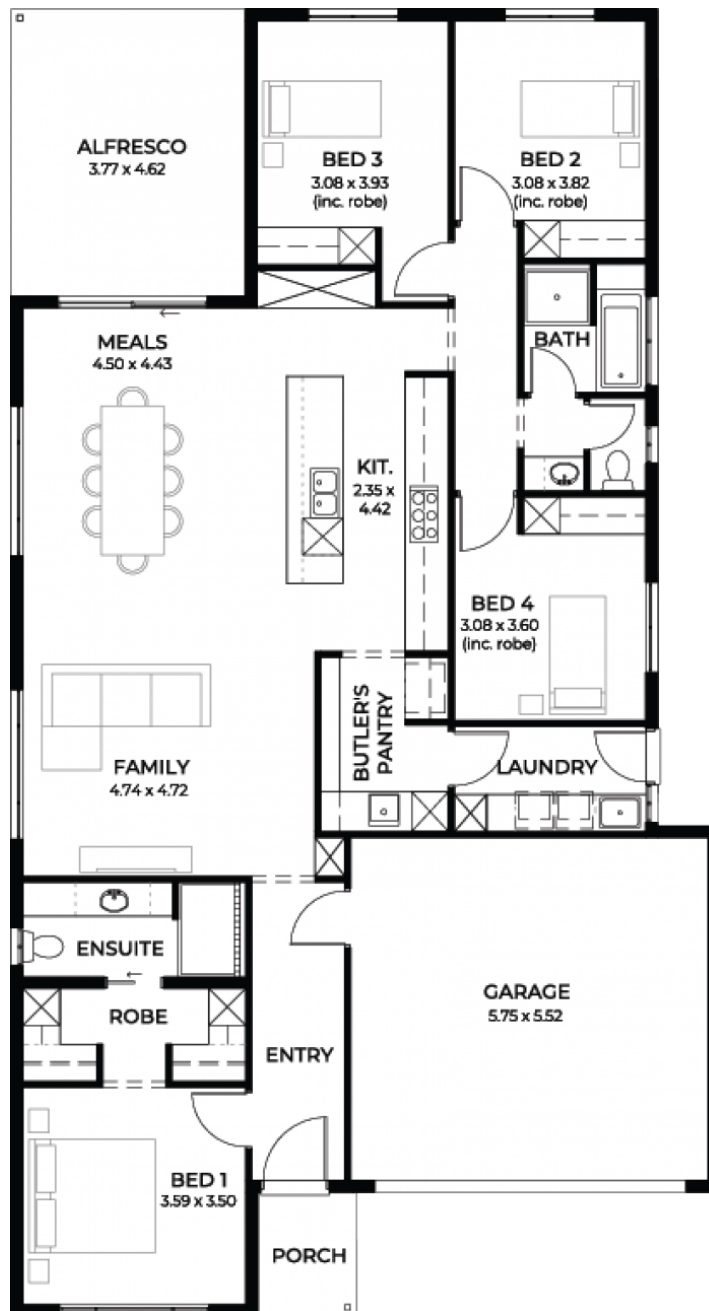
4



2



2



STATESMAN
HOMES

08 8366 0080
statesman-homes.com.au

Neil Liu M 0400 681 108
neill@statesman-homes.com.au

* Terms and Condition's apply. For full details go to statesman-homes.com.au/terms-and-conditions/

These exceptional features are just the beginning

Dulcet 3.5 is a practical plan for growing family with 210 sqm for the whole family to enjoy.

Featuring 4 bedroom, 2 living areas and double garage. The open plan living, dining, kitchen and Alfresco are great place to have family friend party. The trendy butler pantry offers plenty space for master chef in your family.

House & land package under \$600k

Generous facade allowance to meet estate encumbrances

900mm Westinghouse stainless steel appliances.

2700mm high ceilings

Tiles to verandah / porch / alfresco

Flyscreens to all windows

Ducted Reverse Cycle air-conditioning

Luxury grade flooring

Panel lift double garage door

6.5KW solar panels included

Pot drawers, Kitchen bin with pull out drawer, Under bench microwave provision with pot drawer, Soft close runners and hinges, Hi Flow water filter included.

Insulation to internal walls, external walls and ceiling

NBN provision

25-year structural warranty

3-month maintenance period

Footings allowance

Further discount may apply

STATESMAN
HOMES

08 8366 0080
statesman-homes.com.au

Neil Liu M 0400 681 108
neill@statesman-homes.com.au