

Brio 5.0

House and Land from
\$617,600*

LOT 1008
NIXON STREET,
VIRGINIA
'VIRGINIA GROVE'

Lot Size: 270.00m²
House Size: 170.10m² / 18.30sqs
Width: 8.90m (incl. garage)
Elevation: Domaine 04 - 8.5m+



2



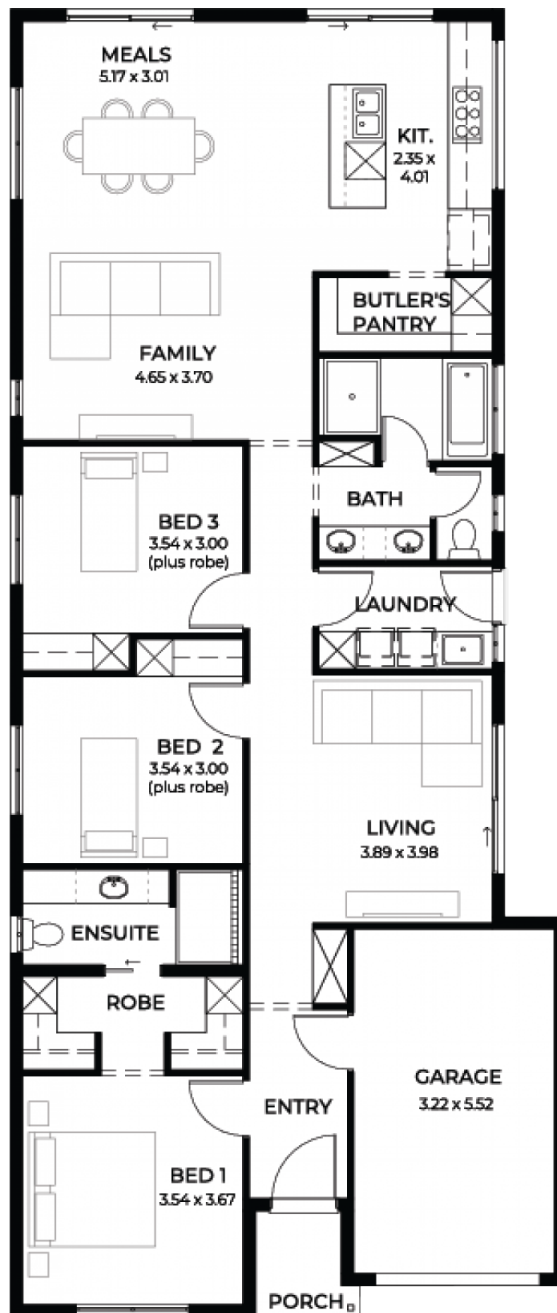
3



2



1



**STATESMAN
HOMES**

08 8366 0080
statesman-homes.com.au

Roshan Kulatunga M 0415 544 058
roshank@statesman-homes.com.au

* Terms and Condition's apply. For full details go to statesman-homes.com.au/terms-and-conditions/

These exceptional features are just the beginning

TITLED LAND! READY TO GO!

Ideal opportunity for First Home Buyers and Investors!!!

Soaring Ceilings: Enjoy the grandeur of 2700mm high ceilings that enhance the sense of space along with 2340 high internal doors.

Elegant Roofline: A stylish 25-degree roof pitch with Colorbond roofing, fascias, and gutters.

Convenient Garage: Equipped with a sleek panel lift door for ease of access.

Luxurious Flooring: Carpet in the bedrooms paired with contemporary timber laminate flooring in the living areas.

Gourmet Kitchen: Westinghouse appliances, including a stainless steel dishwasher, complemented by 20mm designer solid benchtops.

Sophisticated Bathrooms: Full-height wall tiling in the bathroom and ensuite, with 1200mm high tiling in the separate WC. Elegant vanities complete the look and showers with tiled ledges.

Spacious Storage: Walk-in robe with double shelves and hanging rails, plus drawer units in all bedrooms.

Smart Electrical: Downlights and double power points throughout for all your needs.

Customizable Aesthetics: Choose from a wide range of designer color themes to personalize your home.

This property is a perfect blend of style and practicality.