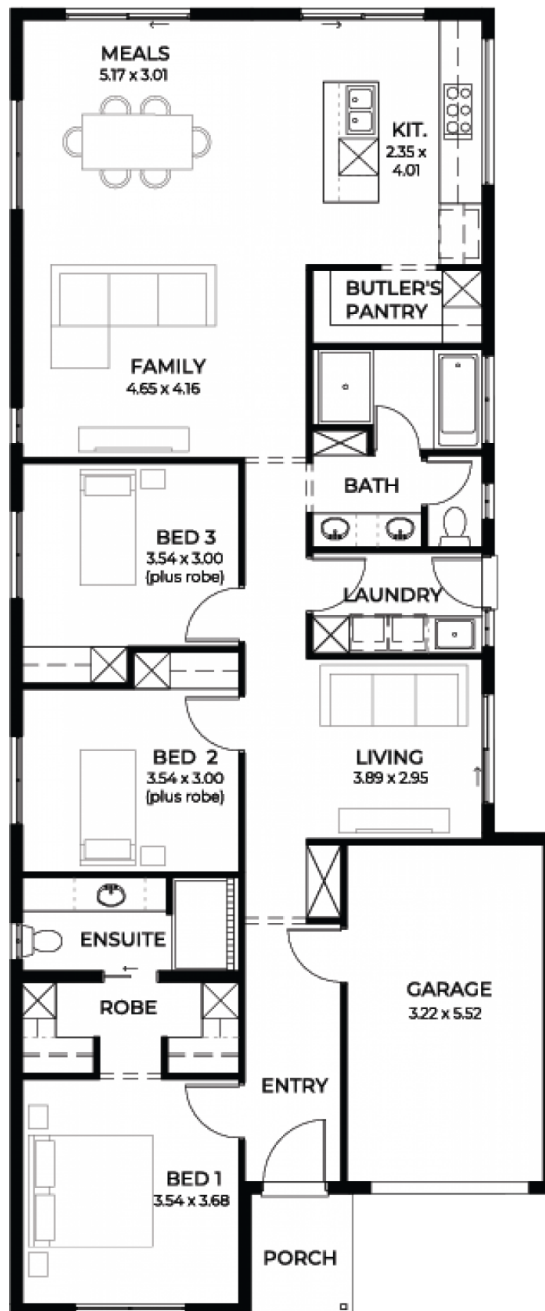


Brio 3.5

House and Land from
\$539,000*

LOT 6812
WRIGHT COURT,
MUNNO PARA
'PLAYFORD ALIVE'

Lot Size: 300.00m²
House Size 170.34m² / 18.33sqs
Width 8.90m (incl. garage)
Elevation: Domaine 10 - 8.5m+



**STATESMAN
HOMES**

08 8366 0080
statesman-homes.com.au

Lee Northam M 0435 419 739
leen@statesman-homes.com.au

* Terms and Condition's apply. For full details go to statesman-homes.com.au/terms-and-conditions/

These exceptional features are just the beginning

THIS WEEKED! DON'T WAIT!

Ducted reverse Cycle air-conditioning

Carpet to bedrooms

Timber floors to rest of house (not wet areas)

6.6kw solar system

Upgraded 900mm stainless steel appliances

Driveway and perimeter paving

2700mm High ceilings

Colorbond roofing included

Insulation to external walls and ceiling

Generous footings allowance included

NBN provision

25 year structural warranty

3 month maintenance check

STATESMAN
H O M E S

08 8366 0080
statesman-homes.com.au

Lee Northam M 0435 419 739
leen@statesman-homes.com.au