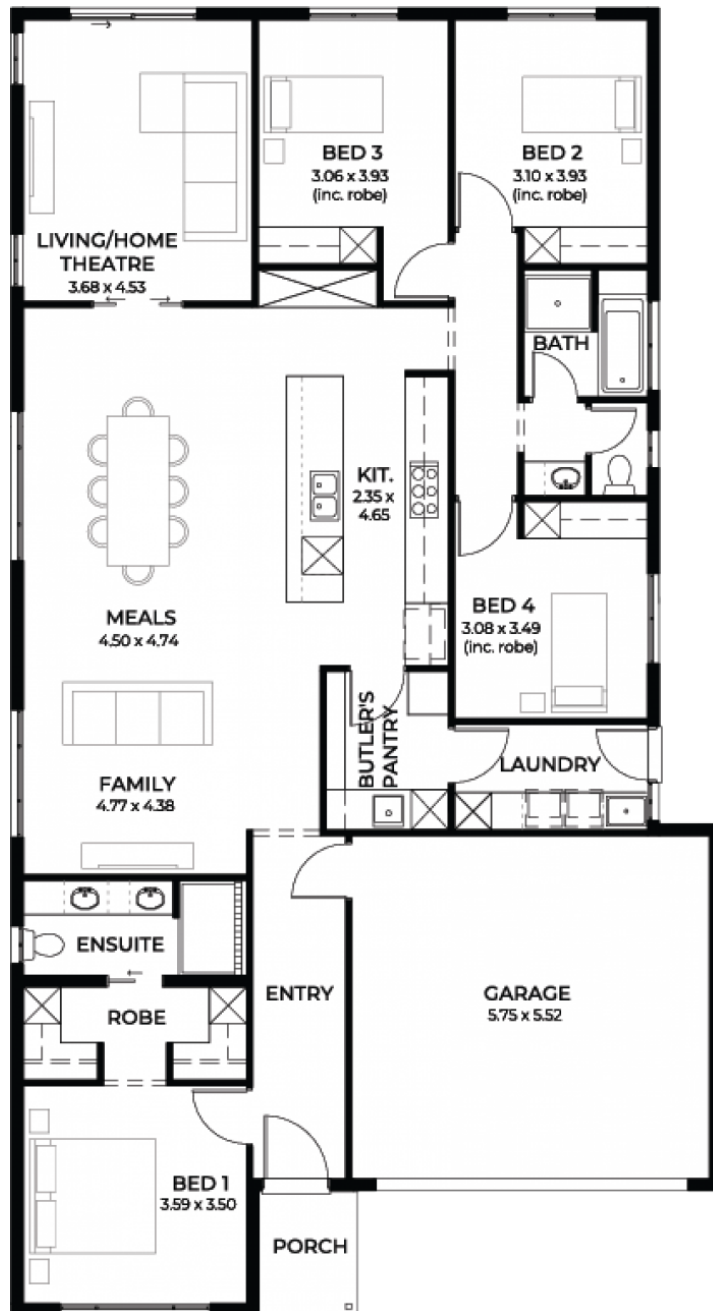


# Zephyr 3.5

House and Land from  
**\$670,685\***

LOT 21  
MENTONE ROAD,  
HAYBOROUGH

Lot Size: 520.00m<sup>2</sup>  
House Size: 214.73m<sup>2</sup> / 23.11sqgs  
Width: 11.40m (incl. garage)  
Elevation: Domaine 10 - 12.5



**STATESMAN  
HOMES**

08 8366 0080  
statesman-homes.com.au

Neil Liu M 0400 681 108  
neill@statesman-homes.com.au

\* Terms and Condition's apply. For full details go to [statesman-homes.com.au/terms-and-conditions/](https://www.statesman-homes.com.au/terms-and-conditions/)

# These exceptional features are just the beginning

Zephyr 3.5 is a practical plan for a growing family with 215 sqm for the whole family to enjoy. Featuring 4 bedrooms, 2 living areas and double garage. The open plan living, dining and kitchen are a great place to have family & friends party. The trendy butler pantry offers plenty of space for the master chef in your family.

Get into popular Hayborough without breaking your budget

Generous facade allowance to meet estate encumbrances

900mm Westinghouse stainless steel appliances

2700mm high ceilings

Tiles to verandah / porch / alfresco

Flyscreens to all windows

Ducted Reverse Cycle air-conditioning

Luxury grade flooring

Panel lift double garage door

6.6kW solar panels included

Pot drawers, kitchen bin with pull out drawer, under bench microwave provision with pot drawer, soft close runners and hinges, HiFlow water filter included

Insulation to internal walls, external walls and ceiling

NBN provision

25-year structural warranty

3-month maintenance period

Footings allowance

Further discount may apply

---

**STATESMAN**  
**HOMES**

08 8366 0080  
statesman-homes.com.au

Neil Liu M 0400 681 108  
neill@statesman-homes.com.au