

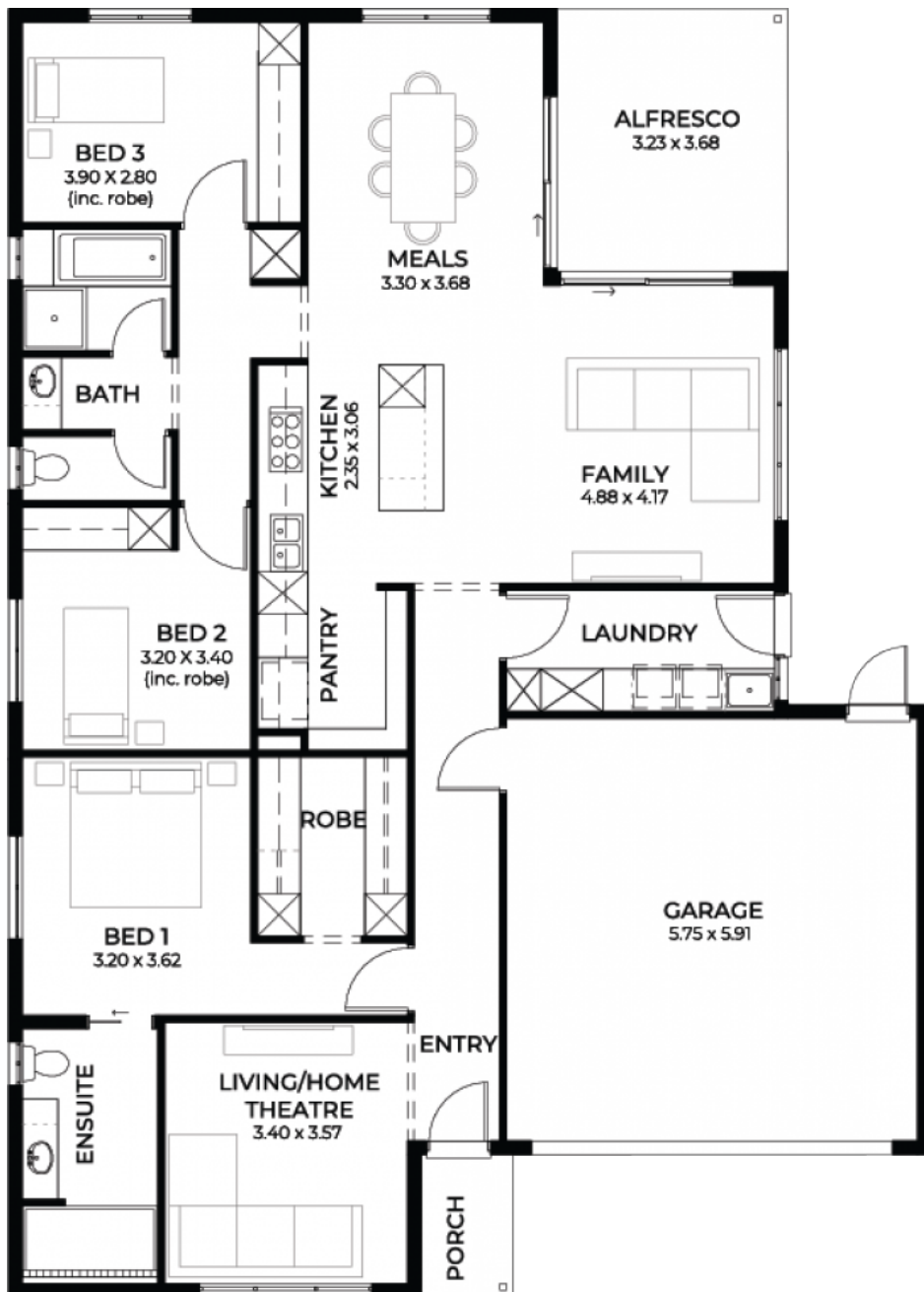
Sequoia 3.5

House and Land from

\$661,660*

LOT 312
OCEANIC CRESCENT,
ENCOUNTER BAY

Lot Size: 450.00m²
House Size: 201.32m² / 21.66sqs
Width: 12.90m (incl. garage)
Elevation: Domaine 03 - 12.5



**STATESMAN
HOMES**

08 8366 0080
statesman-homes.com.au

Anthony Tovey M 0403 746 675
anthony@statesman-homes.com.au

* Terms and Condition's apply. For full details go to statesman-homes.com.au/terms-and-conditions/

These exceptional features are just the beginning

6.6kW solar system

2.7m high ceilings and 2340mm high doors

Garages with auto remote panel-lift door

Impressive kitchens with 900mm appliances, designer solid benchtops, undermount kitchen sink, overhead cupboards, stainless steel dishwasher and plumbed water point for fridge

Stunning bathroom and ensuite upgrades including tiled ledges in showers and semi framed shower screens*

Soft close joinery drawers and doors throughout

Laundries, stores and mud rooms with joinery included

Well placed double powerpoints for convenient access

Space saving double wall cavity sliding doors

Ducted reverse cycle air-conditioning with Wi-Fi controller

On-trend timber-style flooring to front entry, rear hallway, family, kitchen and meals

Quality carpet to bedrooms, study and home theatres

Retractable sink mixer

Full height tiling in bathrooms and ensuites with 1200mm high tiling to separate WC/vanities

Security screen doors

Plus more!

STATESMAN
HOMES

08 8366 0080
statesman-homes.com.au

Anthony Tovey M 0403 746 675
anthony@statesman-homes.com.au

* Terms and Condition's apply. For full details go to statesman-homes.com.au/terms-and-conditions/