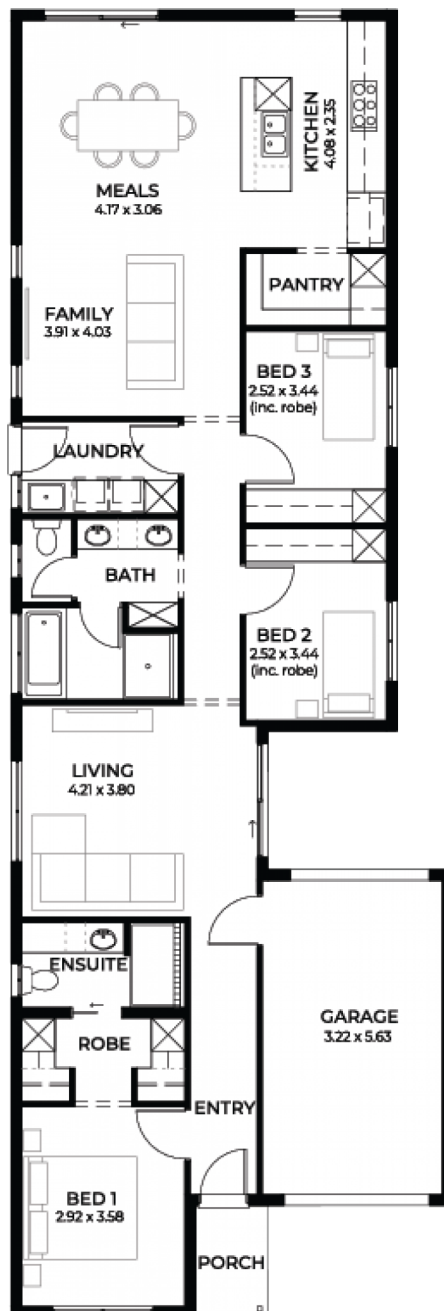


# Verve3.5

House and Land from  
**\$625,315\***

LOT 3  
SMITH STREET,  
ELIZABETH EAST

Lot Size: 420.00m<sup>2</sup>  
House Size: 157.12m<sup>2</sup> / 16.91sqs  
Width: 7.90m (incl. garage)  
Elevation: Domaine 09 - 8.5m+



**STATESMAN  
HOMES**

08 8366 0080  
statesman-homes.com.au

Emma Bedford M 0414 781 414  
emmabd@statesman-homes.com.au

# These exceptional features are just the beginning

6.6kW solar system

2700 ceilings

Butlers pantry

Mud rooms

Solid kitchen bench tops

Kitchen pendant light provisions

Stunning laundry joinery and shelves and draws to the robes

Tier 2 timber laminate to front entry, rear hallway, family, kitchen and meals

Tier 2 carpet to bedrooms, study and home theatre

Ducted reverse cycle air conditioning with wifi controller

900mm appliances

Pot drawers (as per individual plans)

Kitchen bin with pull out drawer (as per individual plans)

Kitchen Filter - Hi Flow to kitchen sink

Full height tiling in the ensuite and bathrooms

Tiled shower ledges to each bathroom.

25 degree roof pitch with 450mm eaves

panel lift Colorbond garage door

2340mm high Redicote internal painted doors

2 heat light combination exhaust fan to bathroom and ensuite

Dishwasher

Waterpoint to fridge

Slab and tiles to the alfresco

3 month warranty period

25 year structural guarantee

AND SO MUCH MORE

---

**STATESMAN**  
**HOMES**

08 8366 0080  
statesman-homes.com.au

Emma Bedford M 0414 781 414  
emmabd@statesman-homes.com.au