

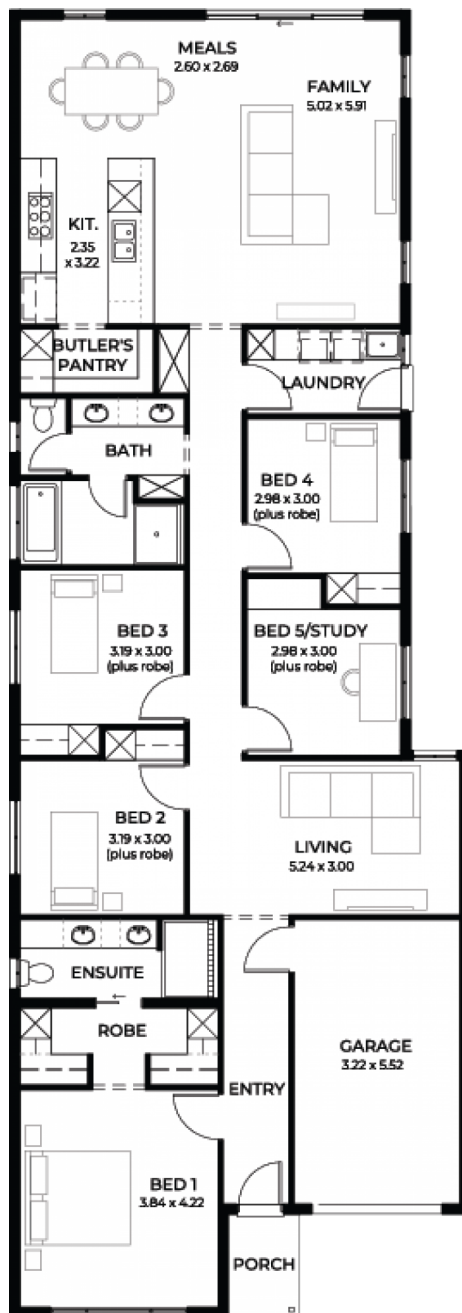
Senso 3.5

House and Land from

\$665,123*

LOT 95
MATTHEW ROAD,
ANGLE VALE
'BURGUNDY ESTATE'

Lot Size: 330.00m²
House Size 202.48m² / 21.79sqs
Width 8.90m (incl. garage)
Elevation: Domaine 03 - 8.5m+



**STATESMAN
HOMES**

08 8366 0080
statesman-homes.com.au

Neil Liu M 0400 681 108
neill@statesman-homes.com.au

These exceptional features are just the beginning

Senso 3.5 a practical plan for a growing family, with 202 sqm for the whole family to enjoy.

Featuring 4 bedrooms plus a study/5th bedroom, 2 living areas and a single garage. The open plan living, dining and kitchen are great places to have family & friends. The trendy butlers pantry offers plenty space for the master chef in your family.

Get into popular Angle Vale without breaking your budget

Generous facade allowance to meet estate encumbrances

900mm Westinghouse stainless steel appliances

2700mm high ceilings

Tiles to verandah/porch/alfresco

Fly screens to all windows

Ducted reverse cycle air-conditioning

Luxury grade flooring

Panel lift double garage door

6.6KW solar panels included

Pot drawers, kitchen bin with pull out drawer, under bench microwave provision with pot drawer, soft close runners and hinges, high flow water filter included

Insulation to internal walls, external walls and ceiling

NBN provision

25-year structural warranty

3-month maintenance period

Footings allowance

\$19000 worth of kitchen and bathroom upgrades, such as a solid surface benchtop in the kitchen

Titled land - ready to build

STATESMAN
HOMES

08 8366 0080
statesman-homes.com.au

Neil Liu M 0400 681 108
neill@statesman-homes.com.au