

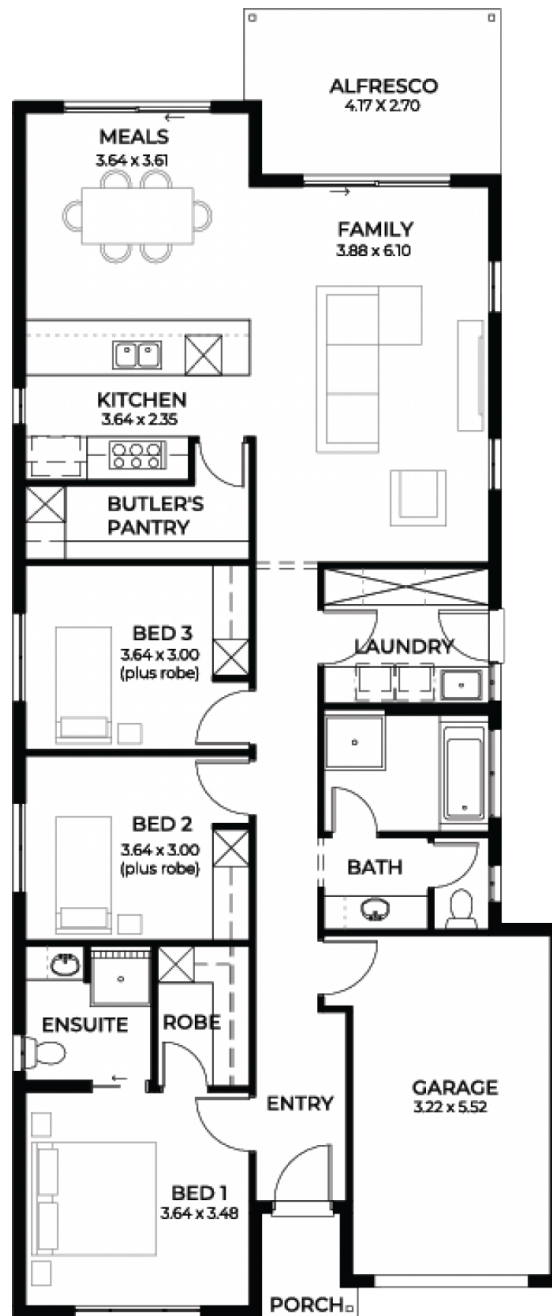
# Milani 5.0

House and Land from

**\$601,205\***

LOT 5001  
KENNEDY AVENUE,  
HINDMARSH ISLAND

Lot Size: 667.00m<sup>2</sup>  
House Size: 167.02m<sup>2</sup> / 17.97sqgs  
Width: 8.90m (incl. garage)  
Elevation: Domaine 05 - 8.5m+



**STATESMAN  
HOMES**

08 8366 0080  
statesman-homes.com.au

Dallas Chivers M 0405 808 434  
dallasc@statesman-homes.com.au

\* Terms and Condition's apply. For full details go to [statesman-homes.com.au/terms-and-conditions/](https://statesman-homes.com.au/terms-and-conditions/)

# These exceptional features are just the beginning

Located in the Coastal Estate on Hindmarsh Island, in the Coorong Quays Estate

This modest home all-inclusive packed with features for the investor or young family it is great value and well thought out

## INCLUSIONS:

\$17K Promotional discount on built price for a limited time only

Designer Front Facade

2.7m High ceiling

Automatic remote controlled panel lift

colorbond garage door

Tiles to verandah / porch / alfresco

Aluminium powder coated awning windows

to main living areas and

sliding windows to the remainder, including

keylocks

Flyscreens to all windows

2340mm high Hume XN5 translucent glazed

front door

kitchen and meals

Ducted reverse cycle air conditioning with wifi controller

Safety lighting throughout

900mm Westinghouse appliances

20mm solid surface benchtop to kitchen

Pot drawers, kitchen bin with pull out

drawer, under bench microwave provision

with pot drawer, soft close runners and

hinges, Hi Flow water filter included.

Recessed kickers and drawer units to

vanities

Floor to ceiling tiling

Basis back to wall dual flush toilet suites

with soft close

45 litre inset trough, broom cupboard and

bin and 300mm deep overheads with

handing