

Celeste 3.5

House and Land from
\$681,781*

LOT 93
SAGE COURT,
MOUNT BARKER

Lot Size: 270.00m²
House Size: 145.01m² / 15.60sqs
Width: 7.50m (incl. garage)
Elevation: Domaine 04 - 8.5m+



1



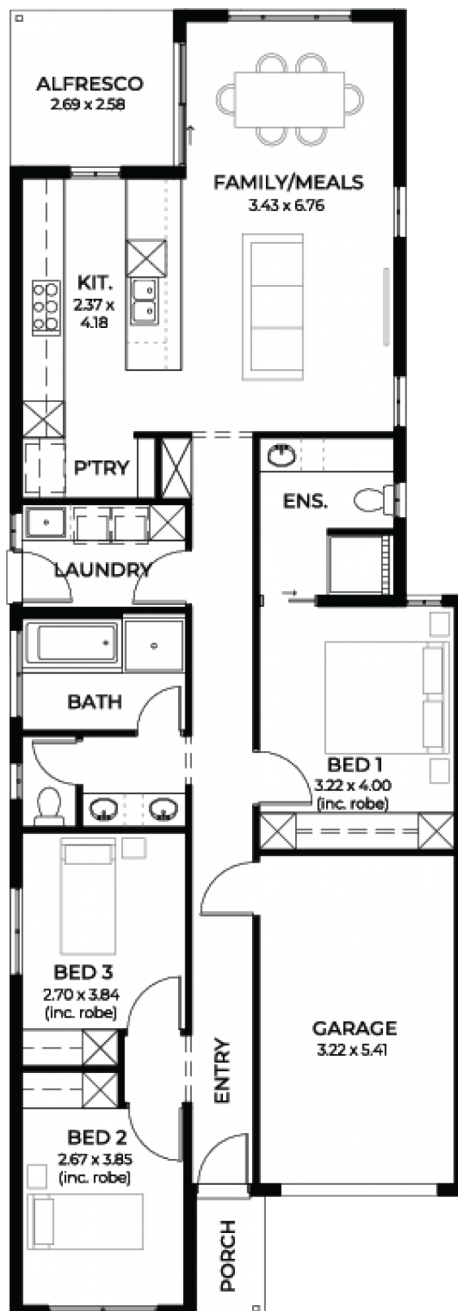
3



2



1



**STATESMAN
HOMES**

08 8366 0080
statesman-homes.com.au

Dallas Chivers M 0405 808 434
dallasc@statesman-homes.com.au

* Terms and Condition's apply. For full details go to statesman-homes.com.au/terms-and-conditions/

These exceptional features are just the beginning

Located in the Adelaide Hills township of Mount Barker in the New released Nadair Estate

This home is all-inclusive packed with features for the young family or investor it is great value and well thought out

INCLUSIONS:

\$17K Promotional discount on built price for a limited time only

Designer front facade

2.7m high ceiling

Automatic remote controlled panel lift

colorbond garage door

Tiles to verandah / porch / alfresco

Aluminium powder coated awning windows

to main living areas and

sliding windows to the remainder, including

keylocks

Flyscreens to all windows

2340mm high Hume XN5 translucent glazed

kitchen and meals

Ducted reverse cycle air conditioning with wifi controller

Safety lighting throughout

900mm Westinghouse appliances

20mm solid surface benchtop to kitchen

Pot drawers, kitchen bin with pull out

drawer, under bench microwave provision

with pot drawer, soft close runners and

hinges, Hi Flow water filter included.

Recessed kickers and drawer units to

vanities

Floor to ceiling tiling

Basis back to wall dual flush toilet suites

with soft close

45 litre inset trough, broom cupboard and

bin and 300mm deep overheads with handing

with 100mm dia

**STATESMAN
HOMES**

08 8366 0080
statesman-homes.com.au

Dallas Chivers M 0405 808 434
dallasc@statesman-homes.com.au