

# Verve3.5

House and Land from  
**\$704,650\***

LOT 99  
SAGE COURT,  
MOUNT BARKER

Lot Size: 573.00m<sup>2</sup>  
House Size: 157.12m<sup>2</sup> / 16.91sqgs  
Width: 7.90m (incl. garage)  
Elevation: Domaine 05 - 8.5m+



2



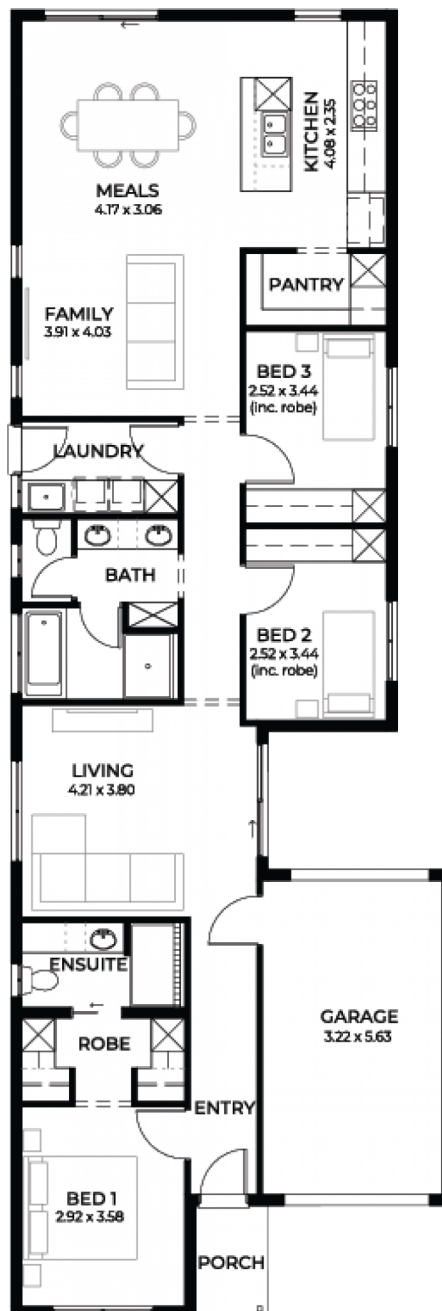
3



2



1



**STATESMAN  
HOMES**

08 8366 0080  
statesman-homes.com.au

Dallas Chivers M 0405 808 434  
dallasc@statesman-homes.com.au

# These exceptional features are just the beginning

Located in the Adelaide Hills township of Mount Barker, in the New released Nadair Estate

This home all-inclusive is packed with features for the young family, downsizer or investor it is great value and well thought out

## INCLUSIONS:

\$17K Promotional discount on built price for a limited time only

Designer front facade

2.7m high ceiling

Automatic remote controlled panel lift

colorbond garage door

Tiles to verandah / porch / alfresco

Aluminium powder coated awning windows

to main living areas and

sliding windows to the remainder, including

keylocks

Flyscreens to all windows

2340mm high Hume XN5 translucent glazed

kitchen and meals

Ducted reverse cycle air conditioning with

wifi controller

Safety lighting throughout

900mm Westinghouse appliances

20mm solid surface benchtop to kitchen

Pot drawers, kitchen bin with pull out

drawer, under bench microwave provision

with pot drawer, soft close runners and

hinges, Hi Flow water filter included.

Recessed kickers and drawer units to

vanities

Floor to ceiling tiling

Basis back to wall dual flush toilet suites

with soft close

45 litre inset trough, broom cupboard and

bin and 300mm deep overheads with

handing