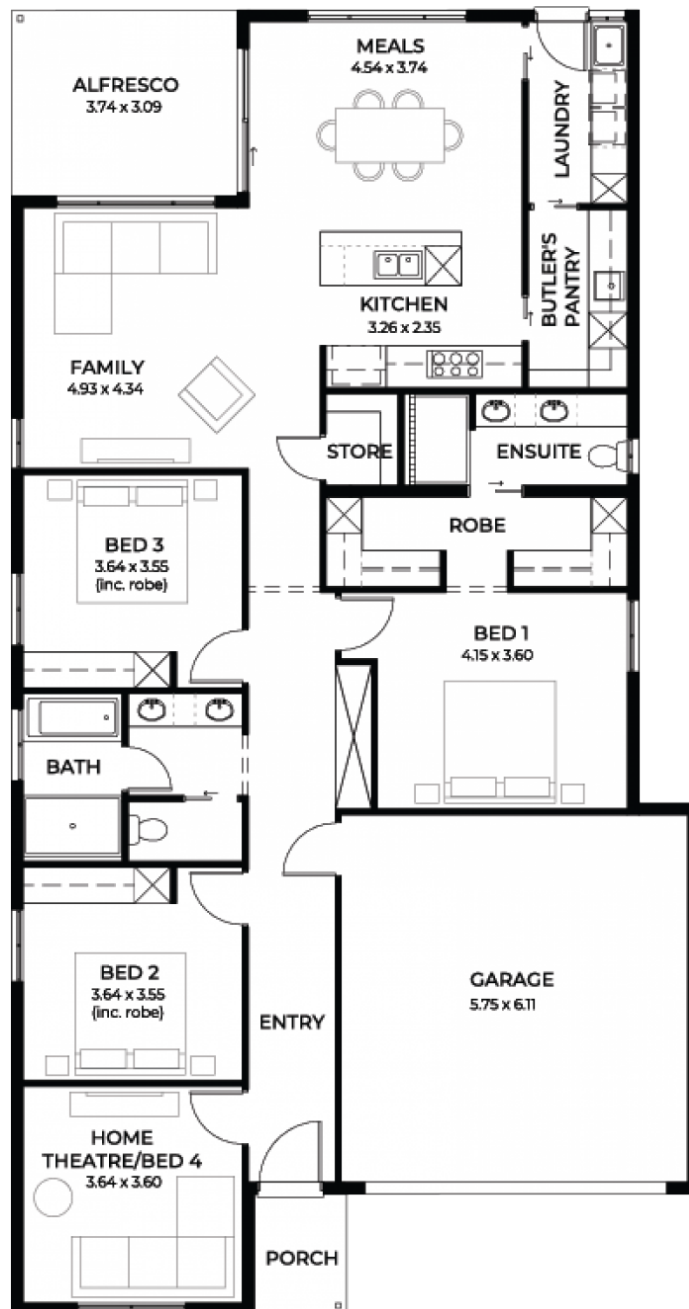


Maxim 3.5

House and Land from
\$778,200*

LOT 1405
SHANNON PLACE,
VIRGINIA
'VIRGINIA GROVE'

Lot Size: 486.00m²
House Size: 222.08m² / 23.90sqgs
Width: 11.40m (incl. garage)
Elevation: Domaine 06 - 12.5



**STATESMAN
HOMES**

08 8366 0080
statesman-homes.com.au

Neil Liu M 0400 681 108
neill@statesman-homes.com.au

* Terms and Condition's apply. For full details go to statesman-homes.com.au/terms-and-conditions/

These exceptional features are just the beginning

Long-await land release in Virginia!

Maxim 3.5 is a practical plan for growing family with 220 (approx.) sqm for the whole family to enjoy.

Featuring 4 bedroom or 2 living areas and double garage. The open plan living, dining kitchen and Alfresco are great places to have family & friends party. The trendy butler pantry offers plenty space for master chef in your family.

Get into popular Virginia without breaking your budget

Generous facade allowance to meet estate encumbrances

900mm Westinghouse stainless steel appliances.

2700mm high ceilings

Tiles to verandah / porch / alfresco

Flyscreens to all windows

Ducted Reverse Cycle air-conditioning

Luxury grade flooring

Panel lift double garage door

6.5KW solar panels included

Pot drawers, kitchen bin with pull out drawer, under bench microwave provision with pot drawer, soft close runners and hinges, Hi Flow water filter included.

Insulation to internal walls, external walls and ceiling

NBN provision

25-year structural warranty

3-month maintenance period

Footings allowance

\$19000 worth of kitchen and bathroom upgrade, such as solid surface benchtop in kitchen

Titled land-ready to build