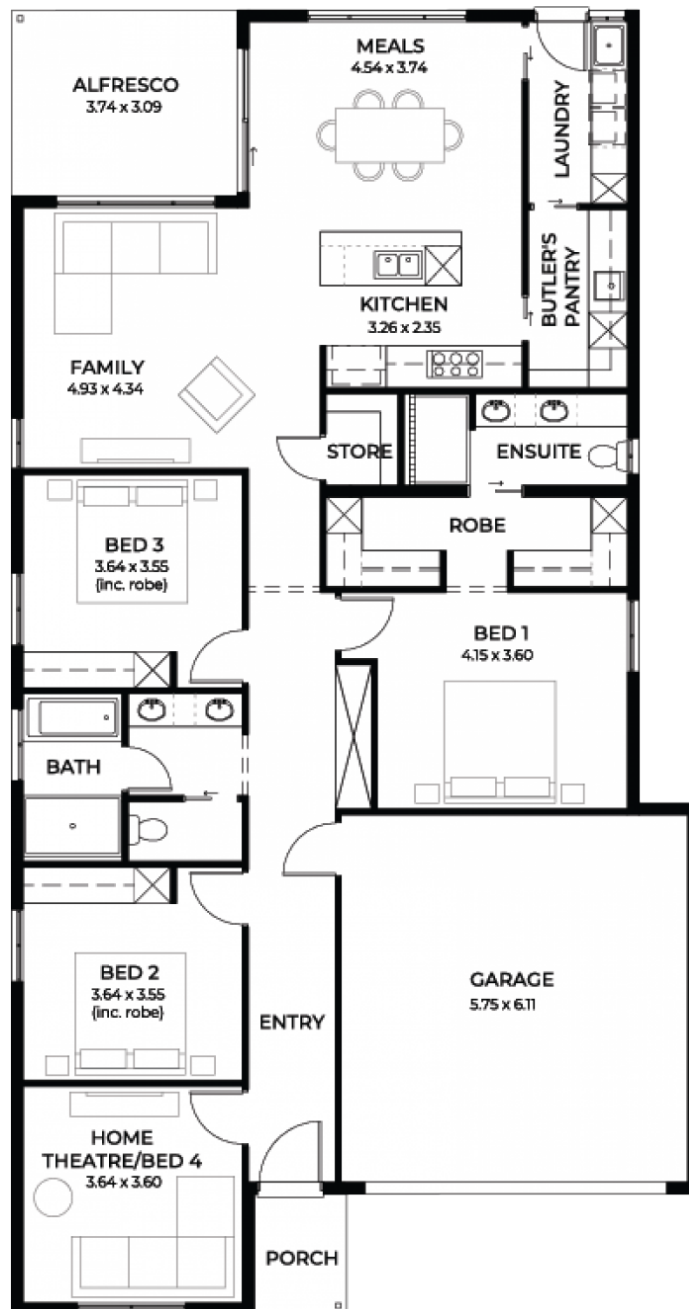


# Maxim 3.5

House and Land from  
**\$750,120\***

LOT 104  
NEW ROAD,  
VIRGINIA

Lot Size: 375.00m<sup>2</sup>  
House Size: 222.08m<sup>2</sup> / 23.90sqgs  
Width: 11.40m (incl. garage)  
Elevation: Domaine 06 - 12.5



**STATESMAN  
HOMES**

08 8366 0080  
statesman-homes.com.au

Neil Liu M 0400 681 108  
neill@statesman-homes.com.au

\* Terms and Condition's apply. For full details go to [statesman-homes.com.au/terms-and-conditions/](https://statesman-homes.com.au/terms-and-conditions/)

# These exceptional features are just the beginning

Long-await land release in Virginia!

Maxim 3.5 is a practical plan for growing family with 220 (approx.) sqm for the whole family to enjoy.

Featuring 4 bedroom, 2 living areas and double garage. The open plan living, dining, kitchen and Alfresco are great places to have family & friends party. The trendy butler pantry offers plenty space for master chef in your family.

Get into popular Virginia without breaking your budget

Generous facade allowance to meet estate encumbrances

900mm Westinghouse stainless steel appliances.

2700mm high ceilings

Tiles to verandah / porch / alfresco

Flyscreens to all windows

Ducted Reverse Cycle air-conditioning

Luxury grade flooring

Panel lift double garage door

6.5KW solar panels included

Pot drawers, Kitchen bin with pull out drawer, Under bench microwave provision with pot drawer, Soft close runners and hinges, Hi Flow water filter included.

Insulation to internal walls, external walls and ceiling

NBN provision

25-year structural warranty

3-month maintenance period

Footings allowance

\$19000 worth of kitchen and bathroom upgrade, such as solid surface benchtop in kitchen

Titled land-ready to build