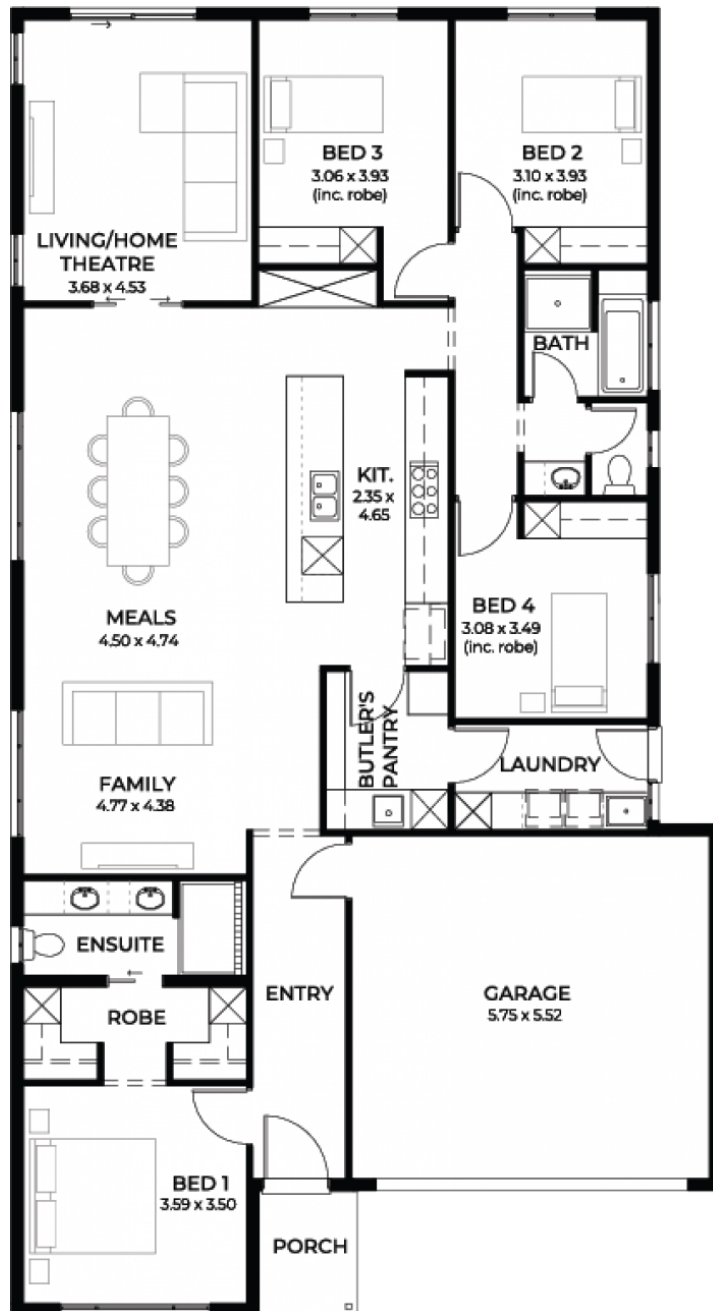


# Zephyr 3.5

House and Land from  
**\$742,500\***

LOT 223  
VALENTINE STREET,  
VIRGINIA

Lot Size: 405.00m<sup>2</sup>  
House Size: 214.73m<sup>2</sup> / 23.11sqgs  
Width: 11.40m (incl. garage)  
Elevation: Domaine 11 - 12.5



**STATESMAN  
HOMES**

08 8366 0080  
statesman-homes.com.au

Krutish Mistry M 0430 447 883  
krutishm@statesman-homes.com.au

# These exceptional features are just the beginning

Reverse cycle air-conditioning

900mm Westinghouse electric oven

900mm Westinghouse gas cooktop

900mm Westinghouse dual fan rangehood

Timber flooring to living and carpets to bedrooms

Double garage with panel lift door

Joinery to kitchen & laundry

2.7 ceiling height

Solar system 6.6 kw

Insulation throughout

Instantaneous hot water service 26L

Joinery to robes

Generous footing allowance

LED downlights throughout

25 year warranty

Stormwater & rainwater tank

NBN connection

---

**STATESMAN**  
**HOMES**

08 8366 0080  
statesman-homes.com.au

Krutish Mistry M 0430 447 883  
krutishm@statesman-homes.com.au