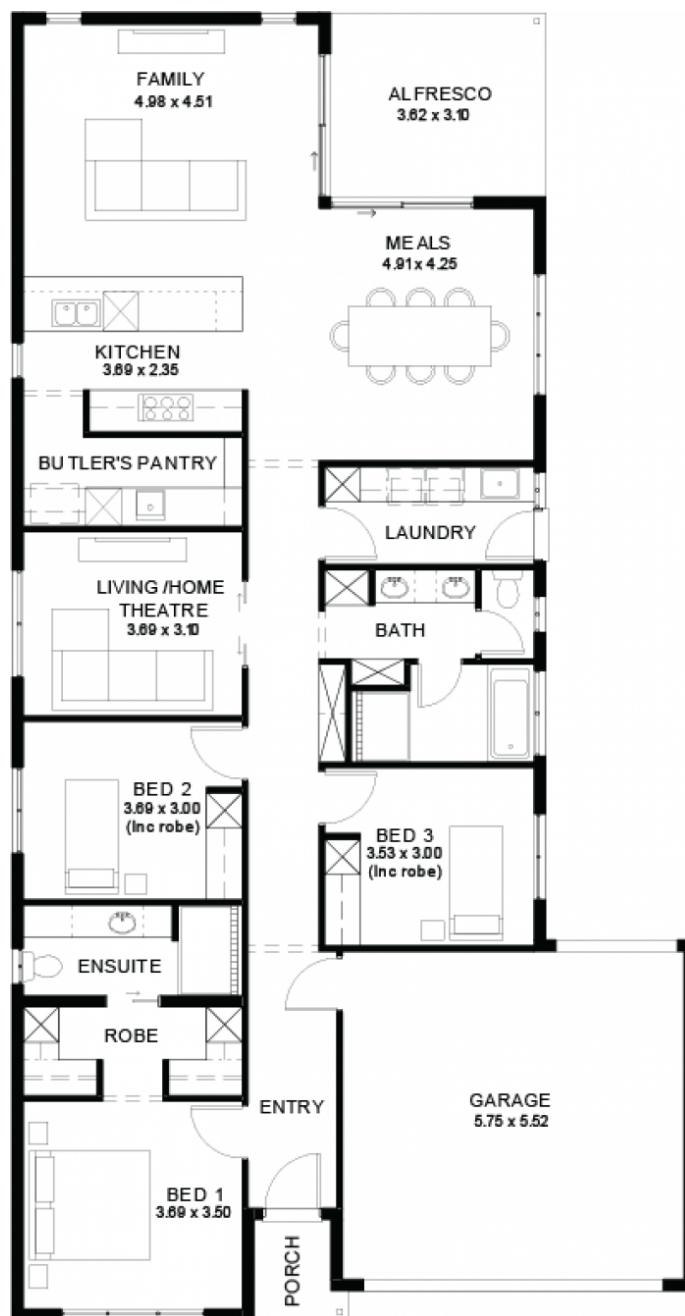


Umbra5.0 (V1.2)

House and Land from
\$696,400*

LOT 914
NEW ROAD,
MALLALA
'GRACEWOOD'

Lot Size: 400.00m²
House Size: 210.77m² / 22.69sqs
Width: 11.50m (incl. garage)
Elevation: Horizon 02 - 12.5m+



**STATESMAN
HOMES**

08 8366 0080
statesman-homes.com.au

Joanne Caruso M 0447 631 130
joannec@statesman-homes.com.au

These exceptional features are just the beginning

Transparent, comprehensive, and unlike any quote you will see elsewhere

No surprises, no guesswork, just a streamlined, stress-free building experience

30-week build time guarantee

Affordable allotment- land ready Q1 2027

Exceptional house and land package, thoughtfully designed to enhance your living experience

Choice of premium facades

Option to upgrade to Aspire Inclusions

Hebel AAC dwelling with enhanced energy efficiency

Premium roofing with Colorbond materials and 6.6kW solar

Full height tiling to bathroom and en-suite

Comprehensive insulation for superior climate control

Gourmet kitchen with top-tier appliances, solid surface benchtops, and soft-close cabinetry

Luxury bathroom and laundry with elegant fittings and storage solutions

Thoughtful interior finishes, high ceilings, and 2340mm tall doors

Advanced electrical features including Ring doorbell and Wi-Fi AC

Turnkey inclusions with perimeter and driveway paving, stormwater, and termite protection

Price valid for 14 days

More options available

STATESMAN
H O M E S

08 8366 0080
statesman-homes.com.au

Joanne Caruso M 0447 631 130
joannec@statesman-homes.com.au