

Zephyr 3.5 (V1.3)

House and Land from
\$792,200*

LOT 617
CRABB AVENUE,
MUNNO PARA WEST
'TUDORVALE'

Lot Size: 375.00m²
House Size: 217.88m² / 23.45sqs
Width: 11.50m (incl. garage)
Elevation: Horizon 02 - 12.5m+

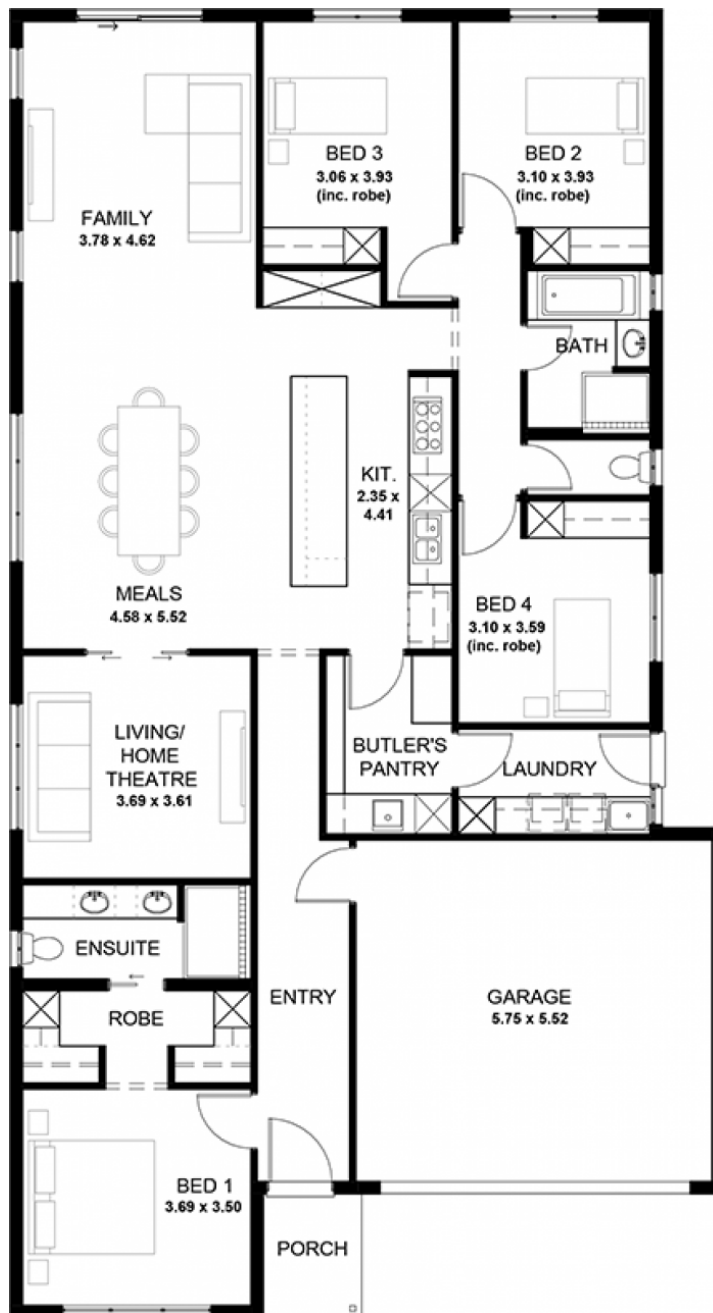


2

4

2

2



**STATESMAN
HOMES**

08 8366 0080
statesman-homes.com.au

Josh Hansford M 0433 445 750
joshh@statesman-homes.com.au

These exceptional features are just the beginning

**	Recessed kickers to vanities for sleek finish
LAND READY IN JULY	Timber laminate floors to living areas; plush carpet to bedrooms & theatre
30-week build time guarantee - fast, reliable turnaround	2340mm high internal doors + cavity sliders
Ducted reverse-cycle air conditioning with Wi-Fi control	Built-in robes with mirrored doors; WIR with shelving and drawers
6.6kW solar system - reduce your energy bills from day one	Awning windows to living areas
Driveway, perimeter path & stormwater included	Clipsal Iconic switches and ample Double Power points, TV & data points
2700mm high ceilings throughout	Joinery fit-out to Laundry including overhead cupboards
7 Star Energy Complaint	Panel lift garage door with remote + rear roller door
900mm Westinghouse stainless steel appliances + solid surface benchtops to kitchen	Garage, alfresco ceiling and internal insulation included
Soft-close joinery throughout	Tiled verandah, alfresco & porch (where applicable to plan)
Butler's pantry with solid surface benchtops	Colorbond roof with 25-degree pitch
Semi-frameless shower screens, tiled ledges & premium tapware	PLUS SO MUCH MORE - Enquire now for full list
Full-height tiling to bathrooms	3-month maintenance period & 25 Year Structural Warranty
Full height tiling to bathroom and en-suite	

STATESMAN
HOMES

08 8366 0080
statesman-homes.com.au

Josh Hansford M 0433 445 750
joshh@statesman-homes.com.au