

# Vestige 3.5 (V1.2)

House and Land from  
**\$823,800\***

LOT 621  
CRABB AVENUE,  
MUNNO PARA DOWNS  
'TUDORVALE'

Lot Size: 517.00m<sup>2</sup>  
House Size: 244.43m<sup>2</sup> / 26.31sqs  
Width: 13.00m (incl. garage)  
Elevation: Horizon 06 - 12.5m+

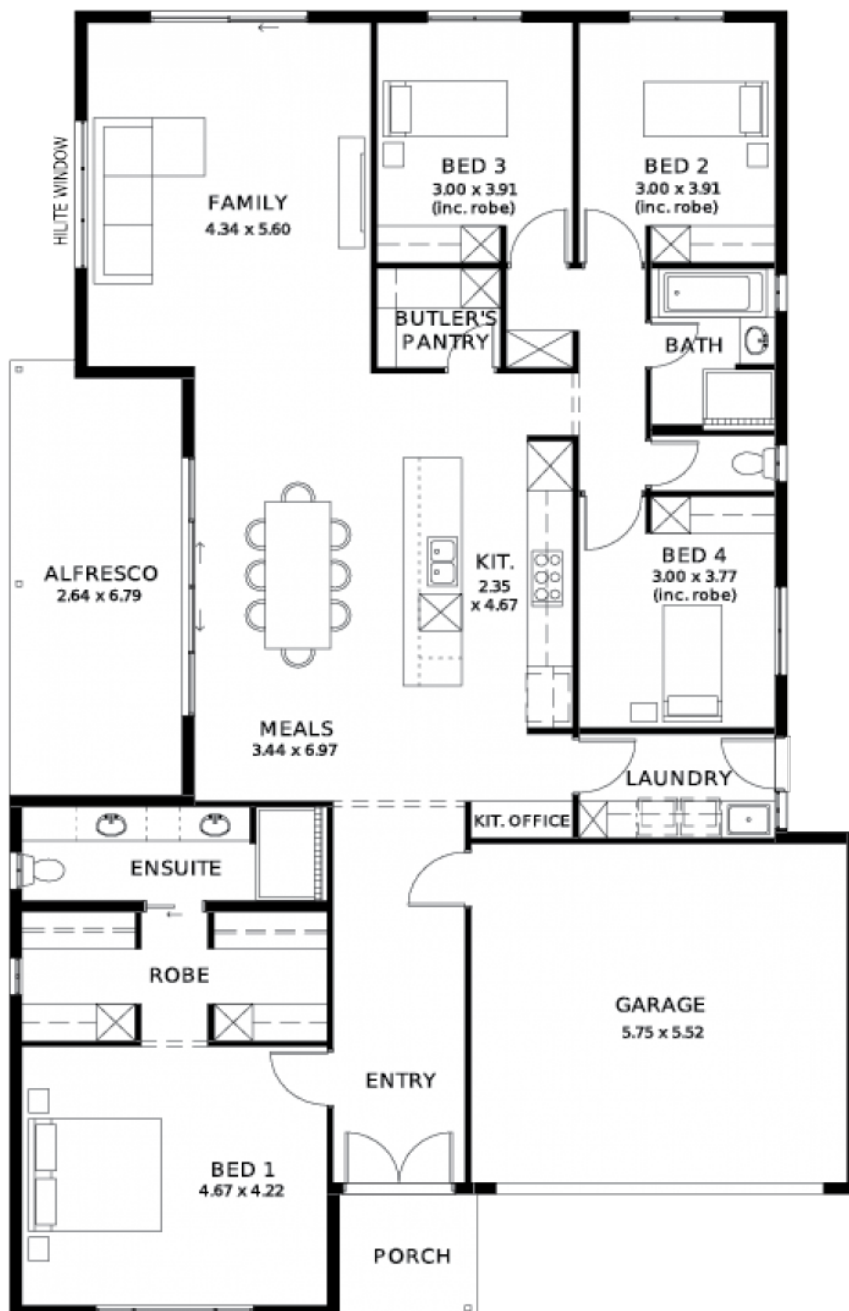


1

4

2

2



**STATESMAN  
HOMES**

08 8366 0080  
statesman-homes.com.au

Josh Hansford M 0433 445 750  
joshh@statesman-homes.com.au

# These exceptional features are just the beginning

**	Recessed kickers to vanities for sleek finish
LAND READY IN JULY	Timber laminate floors to living areas; plush carpet to bedrooms & theatre
30-week build time guarantee - fast, reliable turnaround	2340mm high internal doors + cavity sliders
Ducted reverse-cycle air conditioning with Wi-Fi control	Built-in robes with mirrored doors; WIR with shelving and drawers
6.6kW solar system - reduce your energy bills from day one	Awning windows to living areas
Driveway, perimeter path & stormwater included	Clipsal Iconic switches and ample Double Power points, TV & data points
2700mm high ceilings throughout	Joinery fit-out to Laundry including overhead cupboards
7 Star Energy Complaint	Panel lift garage door with remote + rear roller door
900mm Westinghouse stainless steel appliances + solid surface benchtops to kitchen	Garage, alfresco ceiling and internal insulation included
Soft-close joinery throughout	Tiled verandah, alfresco & porch (where applicable to plan)
Butler's pantry with solid surface benchtops	Colorbond roof with 25-degree pitch
Semi-frameless shower screens, tiled ledges & premium tapware	PLUS SO MUCH MORE - Enquire now for full list
Full-height tiling to bathrooms	3-month maintenance period & 25 Year Structural Warranty
Full height tiling to bathroom and en-suite	

**STATESMAN**  
**HOMES**

08 8366 0080  
statesman-homes.com.au

Josh Hansford M 0433 445 750  
joshh@statesman-homes.com.au