

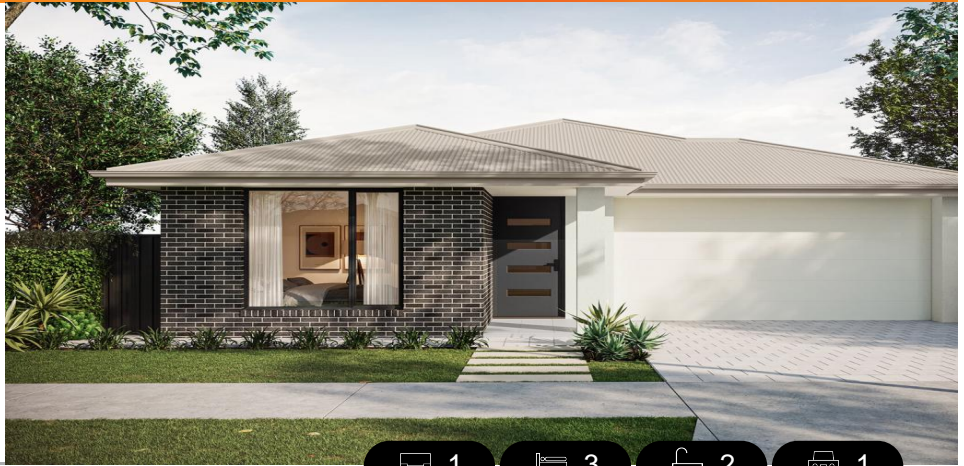
Celeste 3.5 (V1.3)

House and Land from

\$691,100*

LOT 618
CRABB AVENUE,
MUNNO PARA
'TUDORVALE'

Lot Size: 300.00m²
House Size: 145.01m² / 15.60sqs
Width: 7.50m (incl. garage)
Elevation: Horizon 01 - 12.5m+



1



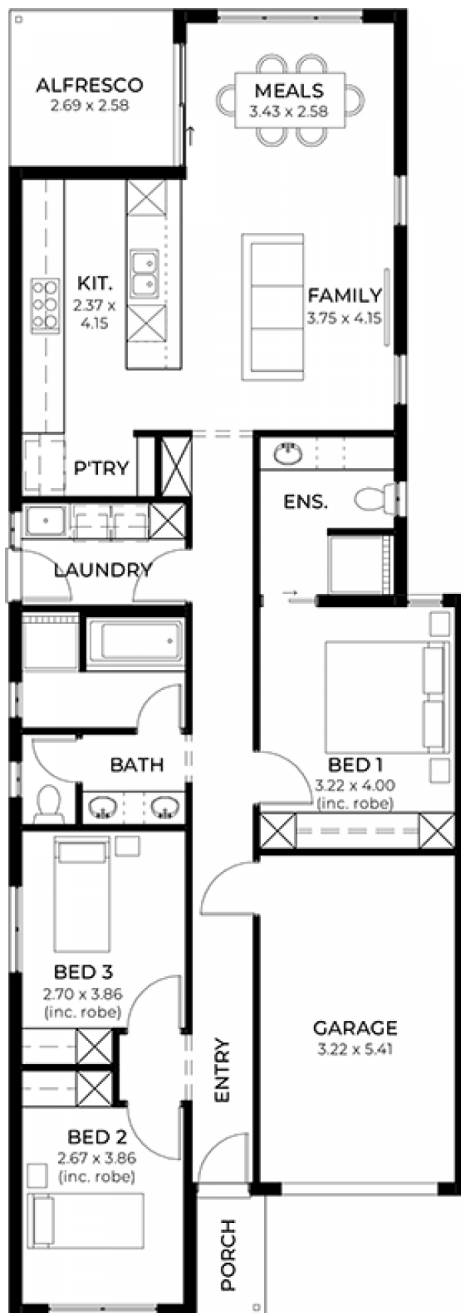
3



2



1



**STATESMAN
HOMES**

08 8366 0080
statesman-homes.com.au

Logan Kulas M 0404 971 008
logank@hickinbotham.com.au

* Terms and Condition's apply. For full details go to statesman-homes.com.au/terms-and-conditions/

These exceptional features are just the beginning

Set construction timeframe to keep your build on track from start to finish

Higher ceilings (2700 mm) and oversized doors (2340 mm) to give the home a more open, premium feel

Colorbond roof paired with a 6.6kW solar system to help reduce ongoing energy costs

Ducted heating and cooling with smart (Wi-Fi) control

Full height tiling to bathroom and en-suite

Well-appointed kitchen featuring stone benchtops, 900 mm appliances and soft-close cabinetry

Modern bathrooms with full-height tiling and quality finishes

Complete flooring package throughout the home

Move-in ready finish - including driveway, paving, stormwater and termite protection

STATESMAN
HOMES

08 8366 0080
statesman-homes.com.au

Logan Kulas M 0404 971 008
logank@hickinbotham.com.au