

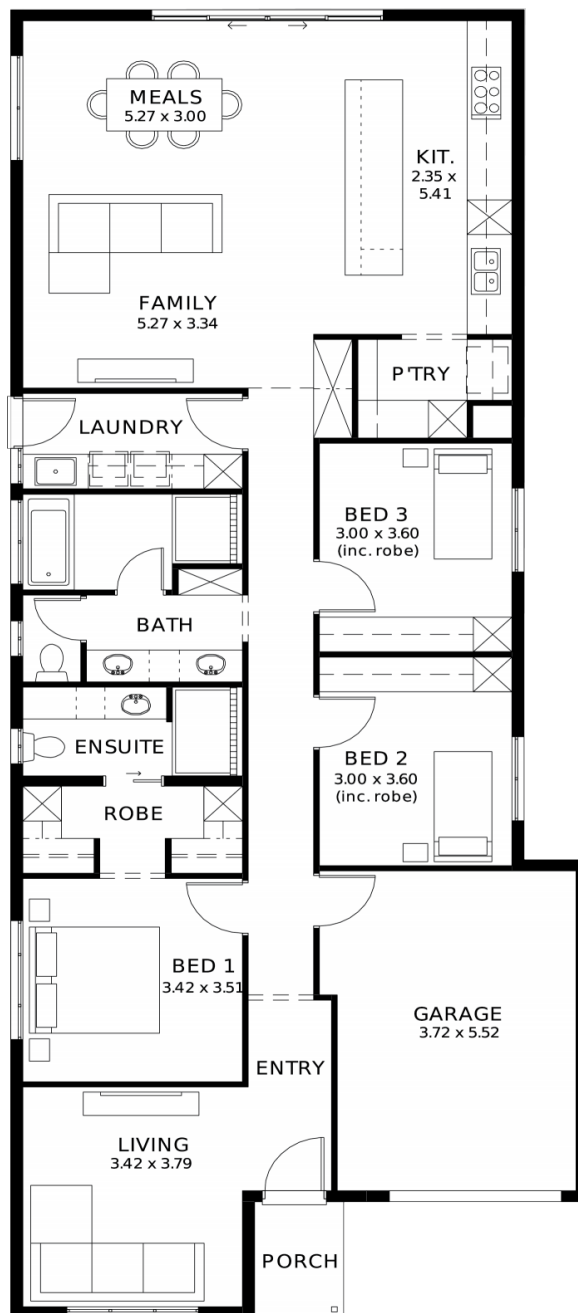
# Gossamer 3.5 (V1.2)

House and Land from

**\$724,800\***

LOT 618  
CRABB AVENUE,  
MUNNO PARA WEST  
'TUDORVALE'

Lot Size: 300.00m<sup>2</sup>  
House Size 180.84m<sup>2</sup> / 19.47sqgs  
Width 9.00m (incl. garage)  
Elevation: Horizon 02 - 12.5m+



**STATESMAN  
HOMES**

08 8366 0080  
statesman-homes.com.au

Joanne Caruso M 0447 631 130  
joannec@statesman-homes.com.au

\* Terms and Condition's apply. For full details go to [statesman-homes.com.au/terms-and-conditions/](https://statesman-homes.com.au/terms-and-conditions/)

# These exceptional features are just the beginning

Transparent, comprehensive, and unlike any quote you will see elsewhere

No surprises, no guesswork, just a streamlined, stress-free building experience

30 Week Build Time Guarantee

Fantastic location - land ready July 2026

Exceptional house and land package, thoughtfully designed to enhance your living experience

Choice of premium facades

Option to upgrade to Aspire Inclusions

Hebel AAC dwelling with enhanced energy efficiency

Premium roofing with Colorbond materials and 6.6kW solar

Full height tiling to bathroom and en-suite

Comprehensive insulation for superior climate control

Gourmet kitchen with top-tier appliances, solid surface benchtops and soft-close cabinetry

Luxury bathroom and laundry with elegant fittings and storage solutions

Thoughtful interior finishes, high ceilings and 2340mm tall doors

Advanced electrical features including ring doorbell and Wi-Fi AC

Turnkey inclusions with perimeter and driveway paving, stormwater and termite protection

Price valid for 14 days

More options available

Not included: Fencing, Landscaping, curtains and blinds, rainwater tank or Aspire upgrades

---

**STATESMAN**  
H O M E S

08 8366 0080  
statesman-homes.com.au

Joanne Caruso M 0447 631 130  
joannec@statesman-homes.com.au