

LOT 503
ANDREWS ROAD,
MUNNO PARA WEST
'TUDORVALE'

Lot Size: 298.00m²
House Size: 172.68m² / 18.59sqs
Width: 9.00m (incl. garage)
Elevation: Horizon 01 HARMONY 12.5m



2



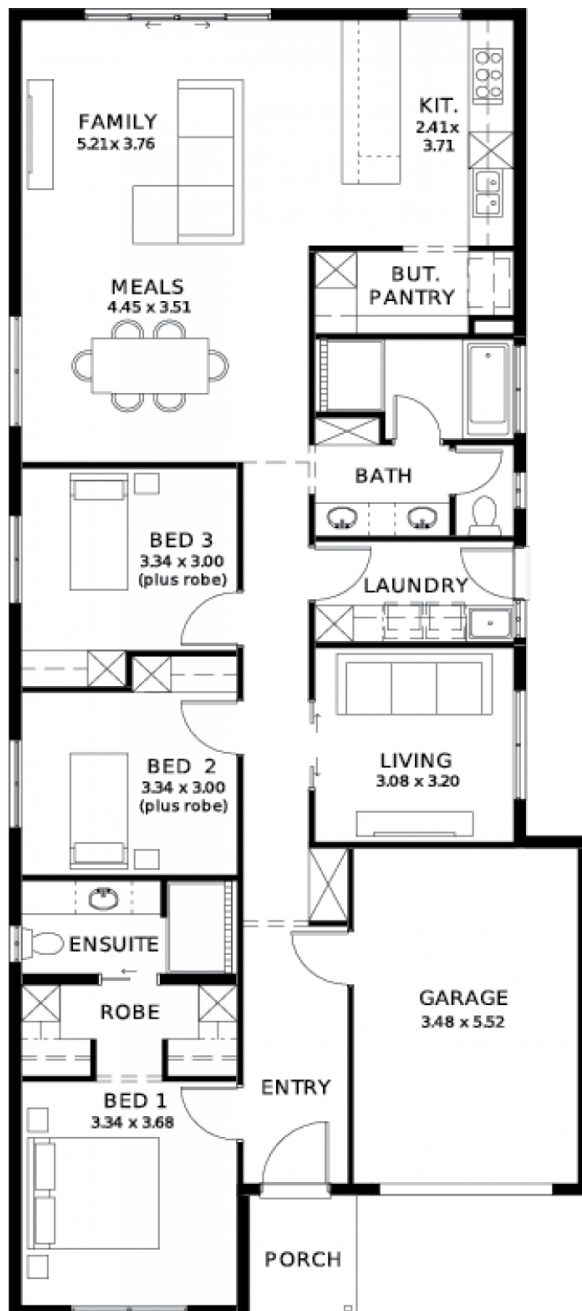
3



2



1



These exceptional features are just the beginning

Built in 30 weeks, what's not to love!!

With over 95 standard inclusions, here's a few we think you'll like:

2700mm ceilings with 2340mm high doors for an elevated look & feel

Large 900mm Westinghouse cooktop for those who love to cook or entertain

Stainless steel dishwasher

Ducted reverse-cycle air conditioning with Wi-Fi controller

Carpet to cosy areas and timber look flooring to main areas

Full height tiling to bathroom and en-suite

Floor-to-ceiling tiles to bathroom and ensuite

Fully paved perimeter and driveway

6.6kW solar system

And so much more!!

What are you waiting for?

Enquire today, or meet me in person at the Andrews Farm Brookmont display

STATESMAN
HOMES

08 8366 0080
statesman-homes.com.au

Angelique Pierce M 0404 200 323
angeliquep@hickinbotham.com.au