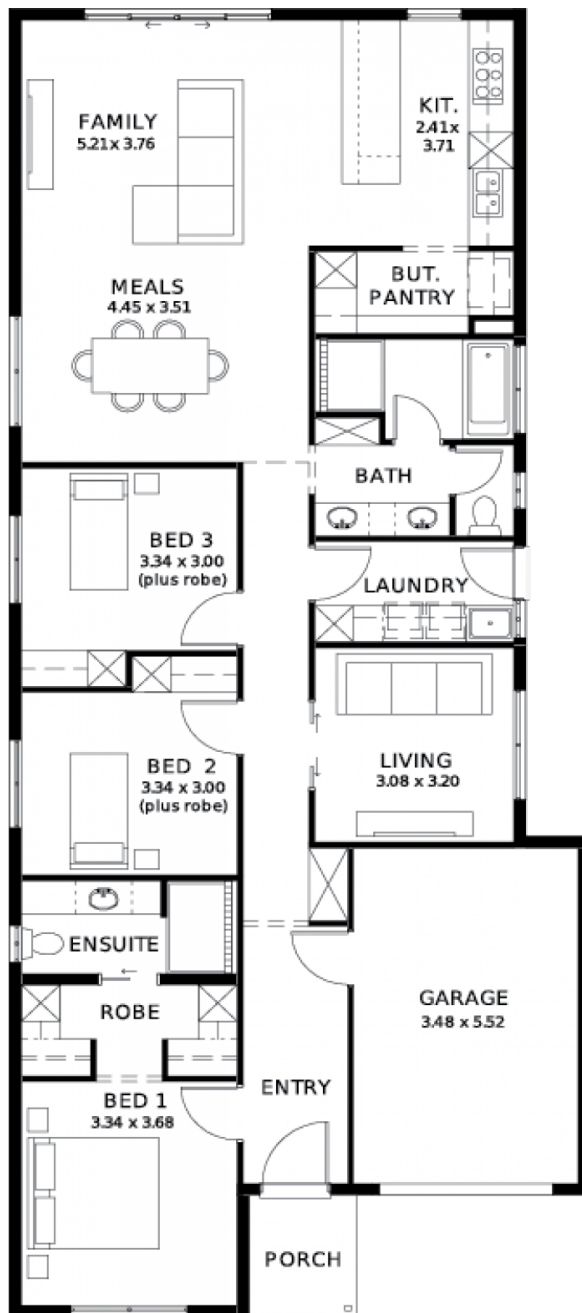
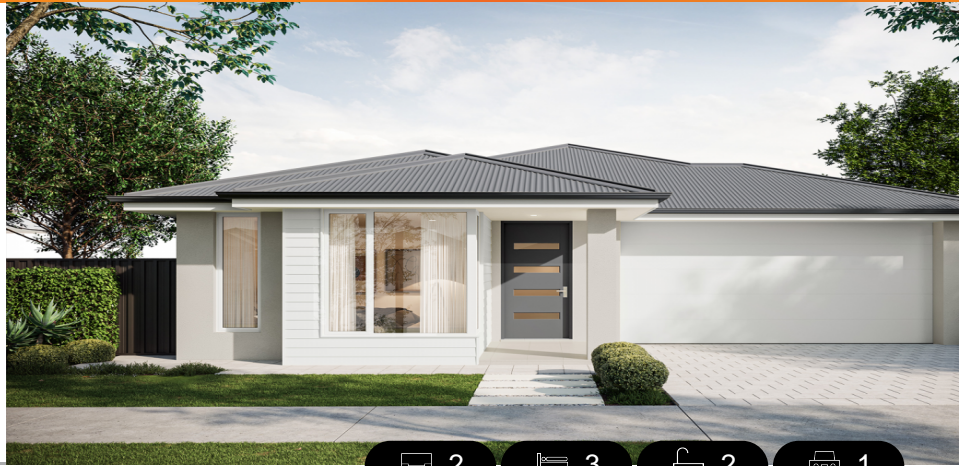


LOT 1301
NEW ROAD,
ANDREWS FARM
'BROOKMONT'

Lot Size: 300.00m²
House Size: 172.68m² / 18.59sqs
Width: 9.00m (incl. garage)
Elevation: Horizon 02 CLASSIC 12.5m



These exceptional features are just the beginning

Land ready September 2026

Upgraded facade

Driveway and perimeter paving

Stormwater

Footings included

Garage with remote control units to panel lift door

2700mm ceilings with high doors

Ensuite to Bed 1

Full height tiling to bathrooms

900mm cooktop, oven and rangehood

Stone benchtop to kitchen

6.6kW Solar

Full height tiling to bathroom and en-suite

Built in robes to Bedrooms

Plenty of built in storage

Carpet to Bedrooms

Timber flooring to remainder

Tiled wet areas

Ducted and zoned reverse cycle AC

Colorbond facias and gutters

Overhead cupboards to kitchen

Instantaneous gas hot water

Keylocks to windows

Smoke detectors

STATESMAN
HOMES

08 8366 0080
statesman-homes.com.au

Joanne Kountourogiannis M 0432 041
joanneko@statesman-homes.com.au